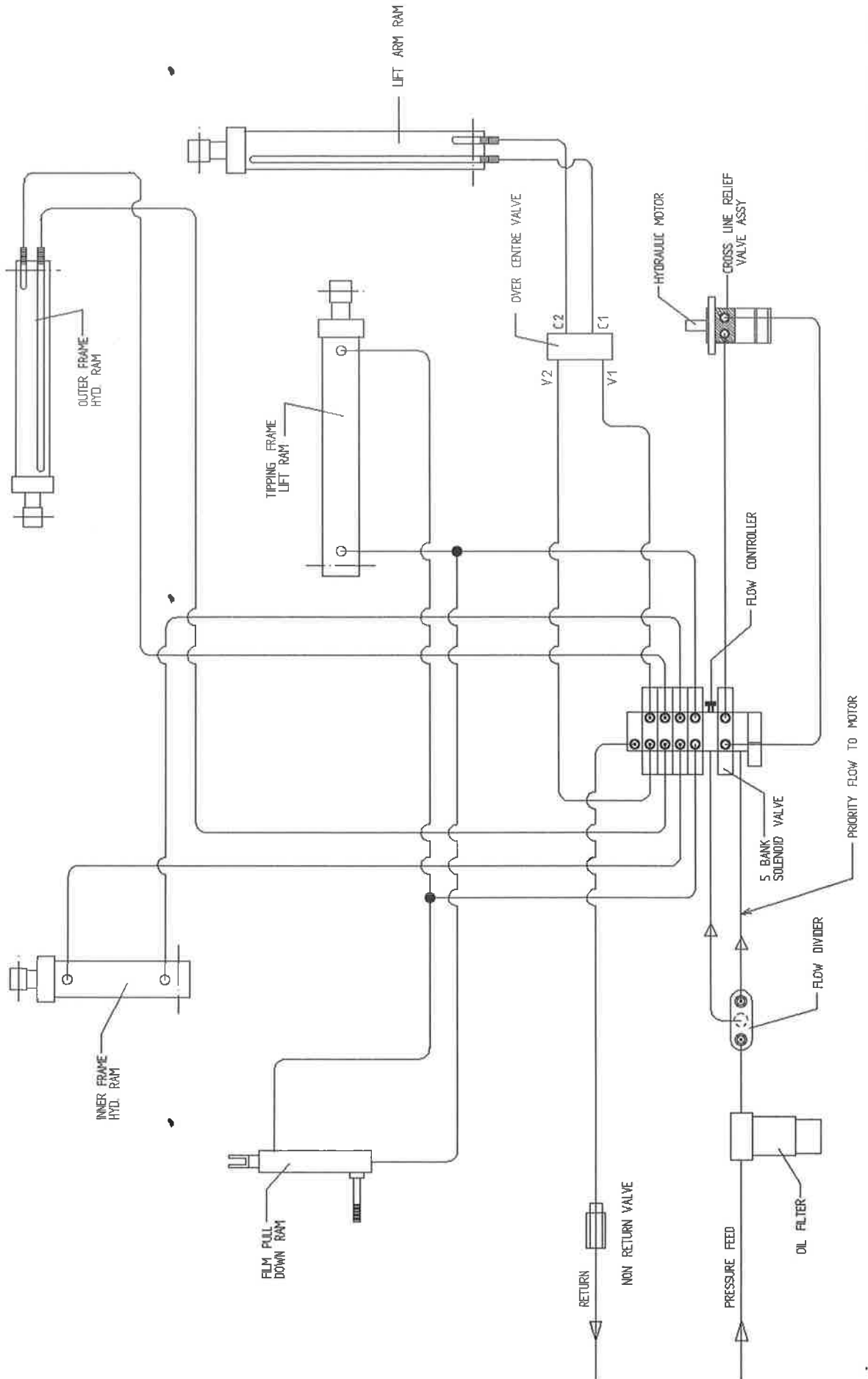
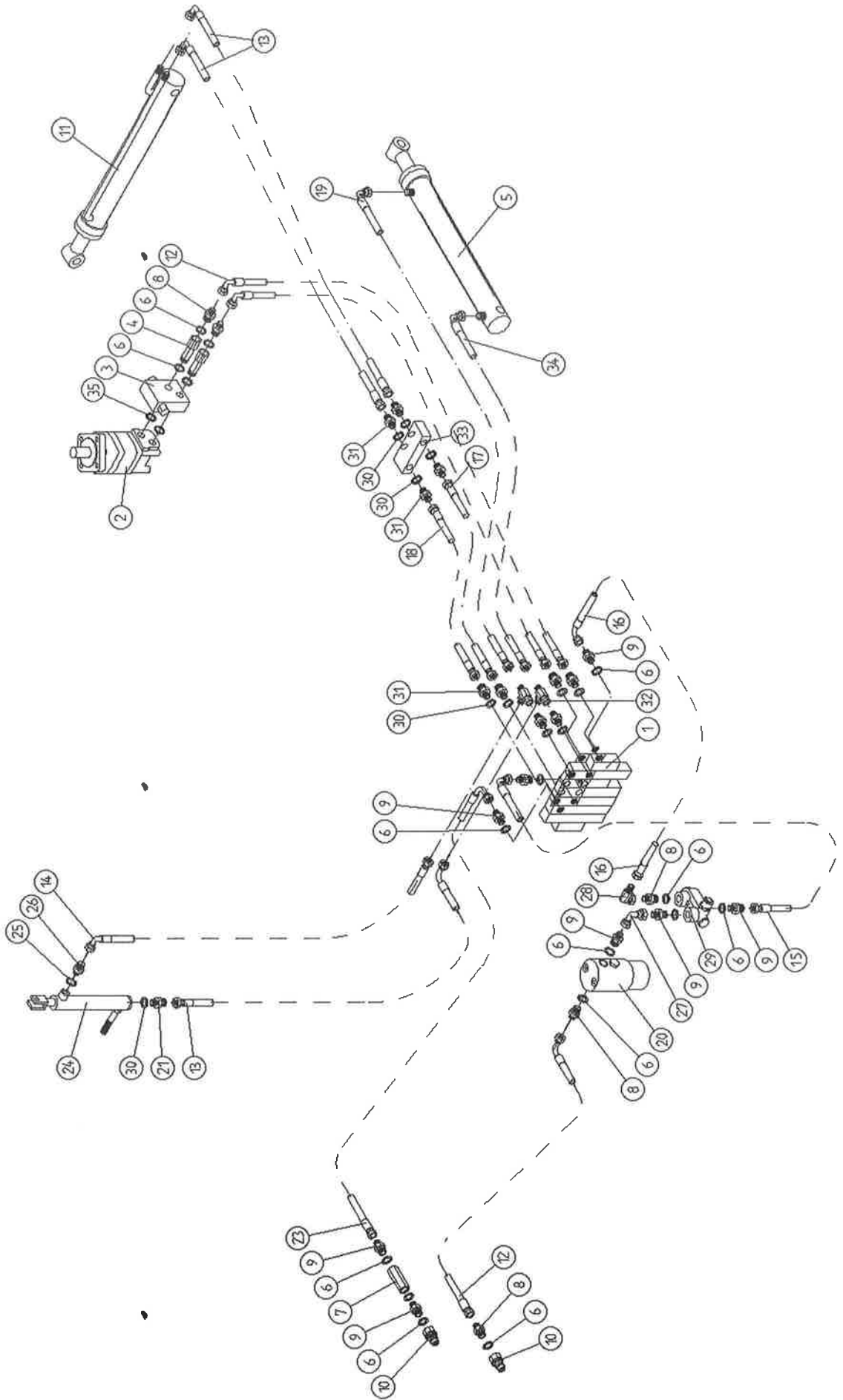


TANCO AUTOWRAP 1060 A MODEL - "TWIN-PAK" HYDRAULIC CIRCUIT DIAGRAM



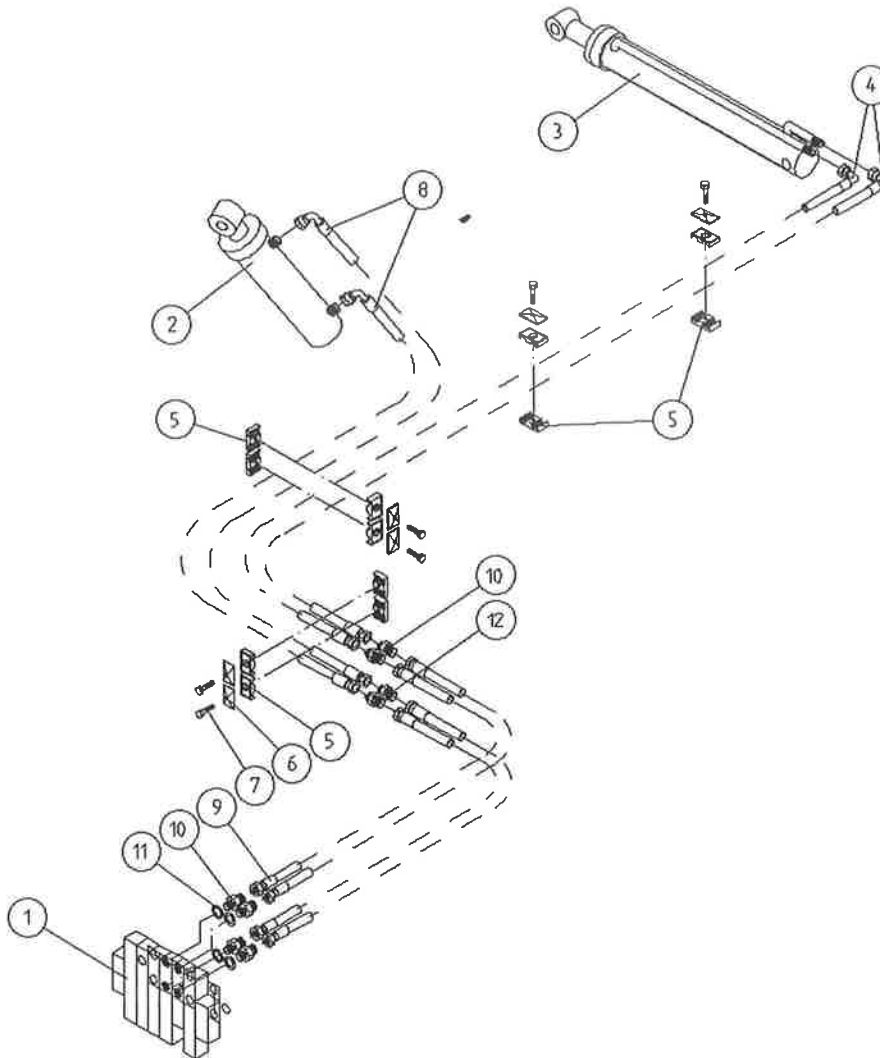
TANCO AUTOWRAP 1060 A MODEL C/W TWIN-PAK (1996)
 HYDRAULIC COMPONENTS



TANCO AUTOWRAP 1060A MODEL (1996)"TWIN-PAK" HYDRAULIC COMPONENTSPARTS LIST

ITEM NO.	DESCRIPTION	QTY	PART-NO.
1.	5 BANK SOLENOID VALVE WITH FULL FLOW	1	Z01-03-10-A5-2
2.	HYDRAULIC MOTOR C.L.	1	Z01-02-RF200
3.	CROSS LINE RELIEF VALVE	1	Z01-03-004
4.	1/2" B.S.P. BOTTOM BANJO BOLT (SPECIAL)	2	Z01-03-002B
5.	HYDRULIC RAM (TIPPING FRAME)	1	Z01-01-AR687
6.	1/2" DOWTY WASHER	13	Z01-04-03
7.	1/2" NON RETURN VALVE	1	Z01-03-017
8.	1/2" x 3/8" ADAPTOR	5	Z01-06-06-08
9.	1/2" x 1/2" ADAPTOR	7	Z01-06-08-08
10.	1/2" MALE END Q/R COUPLING	2	Z01-15-081
11.	HYD. RAM (FOR LIFT ARM)	1	Z01-01-AW
12.	108" ST/90 3/8" D/W HOSE	3	Z38-R2-108-S9
13.	72" ST/90 3/8" D/W HOSE	3	Z38-R2-72-S9
14.	84" ST/90 3/8" D/W HOSE	1	Z38-R2-84-S9
15.	24" ST/90 1/2" D/W HOSE	1	Z12-R2-24-S9
16.	34" ST/90 1/2" D/W HOSE	1	Z12-R2-34-S9
17.	12" ST/ST 3/8" D/W HOSE	2	Z38-R2-12-SS
18.	9" ST/ST 3/8" D/W HOSE	1	Z38-R2-9-SS
19.	48" ST/90 3/8" D/W HOSE	1	Z38-R2-48-S9
20.	FILTER	1	Z01-24-08
21.	3/8" x 3/8" ADAPTOR FITTED WITH 0.06" RESTRICTOR.	1	Z01-03-40
22.	1/2" MALE x 1/2" MALE x 1/2" FEMALE "T" PIECE	1	Z01-12-003
23.	108" ST/90 1/2" D/W HOSE	1	Z12-R2-108-S9
24.	HYD. RAM D/A (PULL DOWN ARM)	1	Z01-01-AW25
25.	1/4" DOWTY WASHER	1	Z01-04-01
26.	1/4" x 3/8" ADAPTOR	1	Z01-06-04-06
27.	1/2" FEMALE x 1/2" FEMALE 90 ELBOW	1	Z01-14-018
28.	3/8" MALE/FEMALE 90 ELBOW	2	Z01-14-015
29.	IN LINE FLOW DIVIDER	1	Z01-03-10-A6
30.	3/8" DOWTY WASHER	11	Z01-04-02
31.	3/8" x 3/8" ADAPTOR	10	Z01-06-06-06
32.	3/8" MALE x 3/8" MALE x 3/8" FEMALE "T" PIECE	2	Z01-12-002
33.	OVER CENTRE VALVE	1	Z01-03-10-A8
34.	30" ST/90 3/8" D/W HOSE	2	Z38-R2-30-S9
35.	COPPER WASHER	2	Z01-04-15

TANCO AUTOWRAP 1060A MODEL 1996
"TWIN-PAK" LIFT ARM HYDRAULIC COMPONENTS

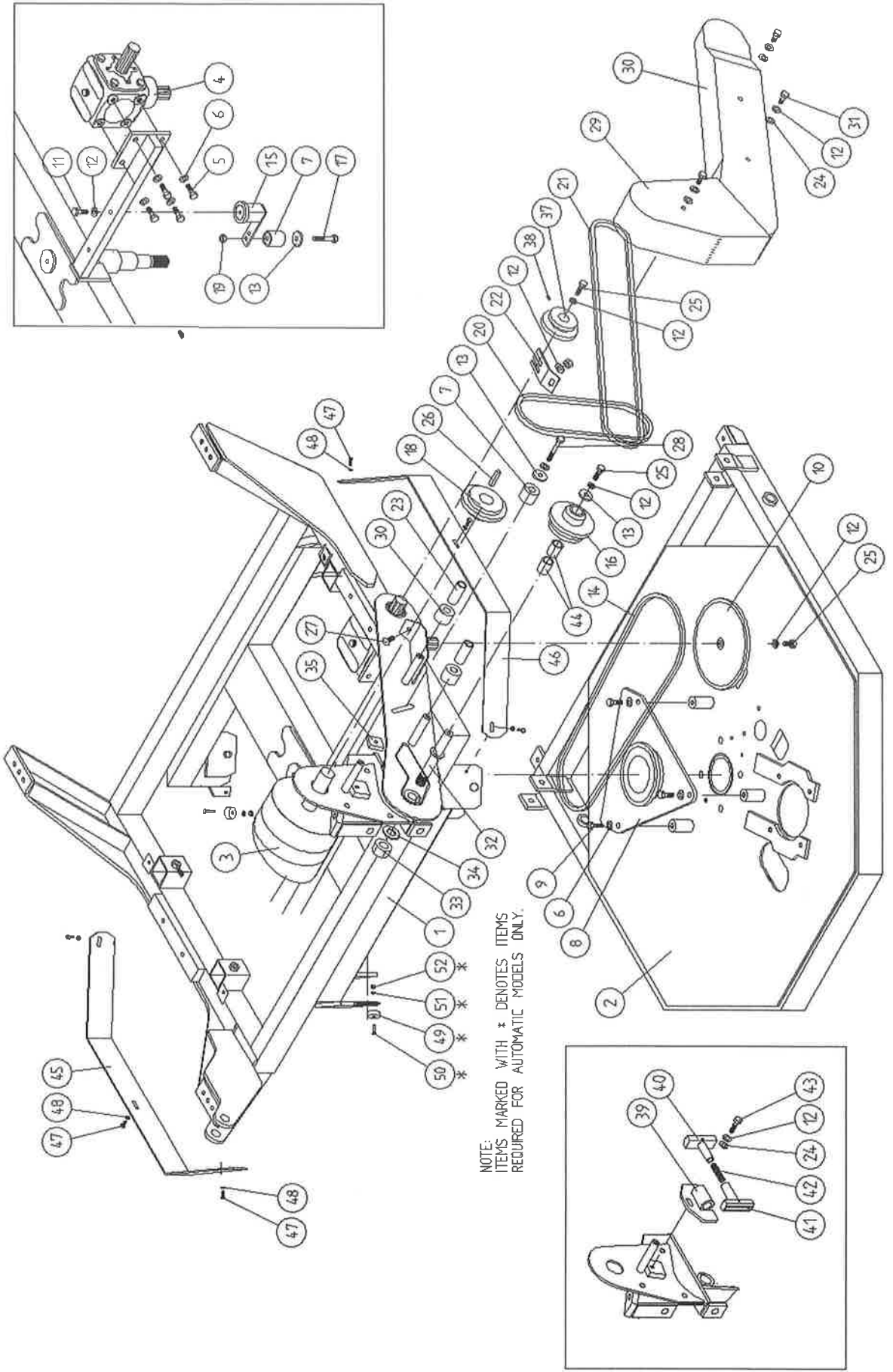


PARTS LIST

ITEM NO.	DESCRIPTION	QTY	PART-NO
1.	5 BANK SOLENOID VALVE	1	Z01-03-10-A5
2.	HYDRAULIC RAM D/A	1	Z01-01-DA980
3.	HYDRAULIC RAM D/A	1	Z01-01-140S
4.	140" ST/90 3/8" D/W HOSE	2	Z38-R2-140-S9
5.	PIPE CLAMP TOP/BOTTOM (DOUBLE)	6	Z01-24-26
6.	TOP CLAMPING PLATE	6	Z01-24-28
7.	M8 HEX HD BOLT x 35mm LONG	6	Z26-042B
8.	72" ST/90 3/8" D/W HOSE	2	Z38-R2-72-S9
9.	36" ST/ST 3/8" D/W HOSE	4	Z38-R2-36-SS
10.	3/8" x 3/8" ADAPTOR	8	Z01-06-06-06
11.	3/8" DOWTY WASHER	4	Z01-04-0
12.	3/8" x 3/8" ADAPTOR FITTED WITH 0.06" RESTRICTOR	1	Z01-03-40

TANCO AUTOWRAP 1060A MODEL"TWIN-PAK" ELECTRICAL COMPONENTSPARTS LIST

ITEM NO	DESCRIPTION	QTY	PART-NO.
1.	CONTROL BOX	1	D606
2.	JUNCTION BOX (5 BANK VALVE)	1	ZDG-JB5
3.	ADDITIONAL CONTROL BOX FOR 1250A MODEL	1	ZDG-RCB
4.	LEAD FOR ADDITIONAL CONTROL BOX C/W HEARTING PLUG.	1	ZDG-CB
5.	WARNER LINEAR ACTUATOR	1	ZD605-510
6.	LIFT ARM SENSOR	1	ZD606-IAS
7.	ADDITIONAL LOOM FOR VALVE C/W HIRCHMANN FOR 1250A	1	ZD606-010
8.	SLIP RING ASSY	1	ZD605-308
9.	BRUSHES	1	ZD606-302
10.	7 CORE CABLE C/W HEARTING PLUG	1	D605-7C
11.	24 CORE INTER CONNECTING LEAD C/W CONNECTORS	1	D605-24C
12.	SYSTEM PRESSURE LEAD	1	ZD605-070
13.	ROTATING SENSOR	1	ZD606-RS
14.	TIP SENSOR	1	ZD606-TS
15.	TWO CORE CABLE FOR SLIP RING	1	D605-02C
16.	MAIN BATTERY LEAD	2	ZD606-030
17.	IN-LINE FUSE	4	ZD606-100
18.	MAIN LEAD FOR JUNCTION BOX	1	ZD606-050
19.	LOOM FOR VALVE C/W HIRSCHMAN	1	ZD606-081



NOTE: ITEMS MARKED WITH * DENOTES ITEMS REQUIRED FOR AUTOMATIC MODELS ONLY.

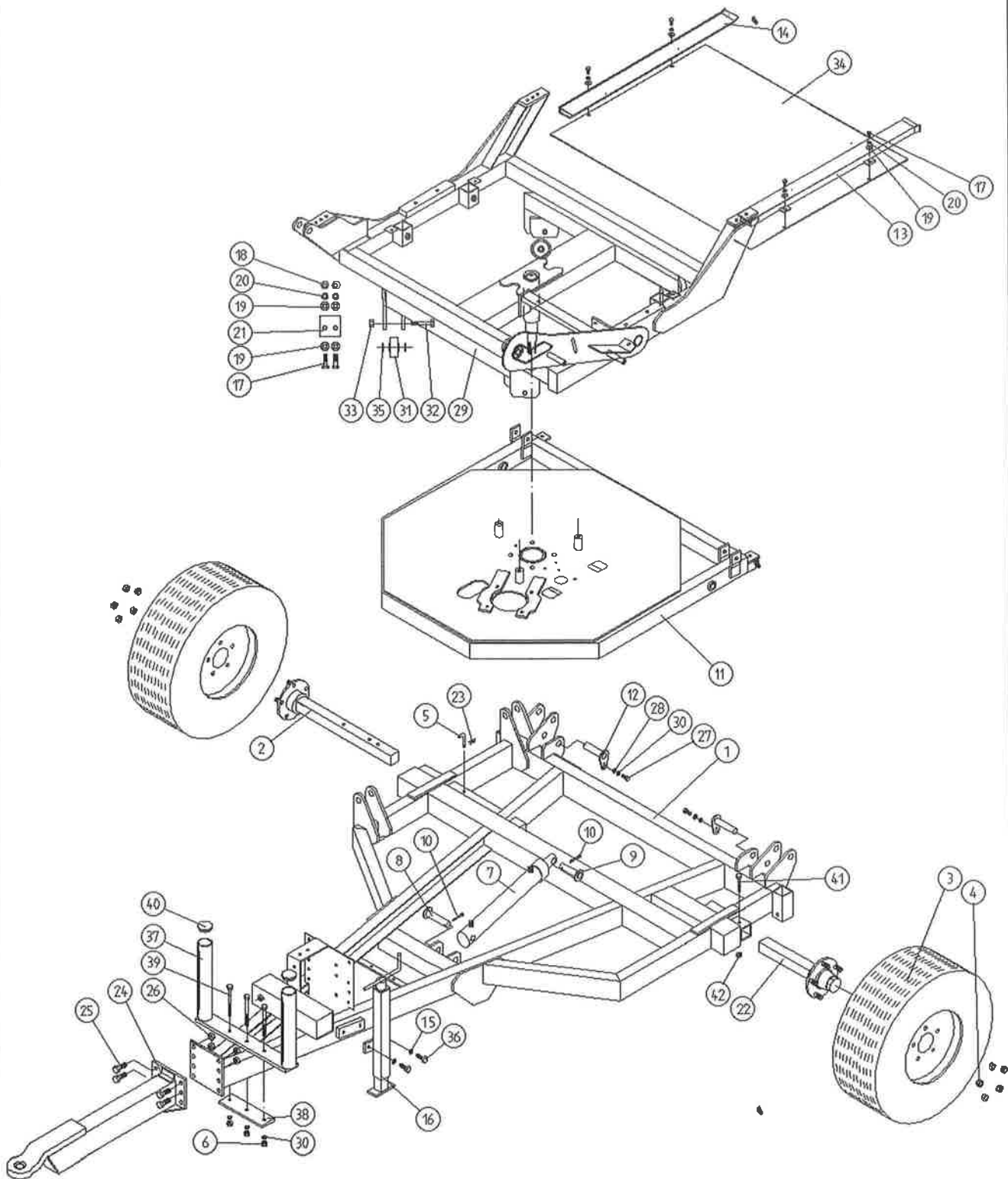
TANCO AUTOWRAP 1060 MODELS 1996
CONSTANT INDEXING DRIVE ASSEMBLY

PARTS LIST

ITEM NO.	DESCRIPTION	QTY	PART-NO.
1.	TURNTABLE ASSY.	1	WD610-TA2
2.	TIPPING FRAME ASSY.	1	WD64-TF
3.	DRIVE ROLLER ASSY.	1	WD610-BRD1
4.	GEAR BOX	1	Z01-25-300
5.	M12 HEX HD SET x 30mm LONG	4	Z26-082S
6.	12mm DIA SPRING WASHER	7	Z12-02-12
7.	CHAIN TENSIONER	2	WD60-CT
8.	CENTRE SPROCKET ASSY 27 TOOTH	1	WD64-CSA
9.	M12 HEX HD SET x 25mm LONG	3	Z26-081S
10.	46 TOOTH SPROCKET	1	Z06-D64-46S
11.	M10 HEX HD SET x 25mm LONG	1	Z26-0611S
12.	10mm DIA SPRING WASHER	9	Z12-02-10
13.	RETAINING COLLAR	3	WD623-071
14.	CHAIN 3/4" PITCH x 87 PITCHES	1	Z09-AW-5
15.	ROSTA TENSIONING UNIT ARM	1	Z06-454
16.	SPROCKET	1	Z06-D610-1620
17.	M10 HEX HD BOLT x 65mm LONG	1	Z26-0671B
18.	SPROCKET	1	Z06-D610-20K
19.	M10 LOCKNUT	1	Z23-10
20.	CHAIN 3/4" PITCH x 50 PITCHES	1	Z09-AW-52
21.	CHAIN 3/4" PITCH x 98 PITCHES	1	Z09-AW-54
22.	CHAIN STRIPPER	1	WD610-185
23.	SPACER	2	WD610-207
24.	10mm DIA FLAT WASHER	6	Z10-02-10
25.	M10 HEX HD SET x 30mm LONG	3	Z26-062S
26.	KEY 12mm x 10mm x 55mm LONG	1	WD610-198
27.	M10 CUP SQ. SCREW x 30mm LONG	1	Z13-112
28.	M10 HEX HD BOLT x 80mm LONG	1	Z26-0691B
29.	CHAIN GUARD (SMALL)	1	WD610-CGS1
30.	CHAIN GUARD (LARGE)	1	WD610-CGL1
31.	M10 HEX HD SET X 25MM LONG (TUFLOCK)	3	Z26-061S
32.	SPROCKET/BACKET PIVOT SHAFT	1	WD610-71
33.	1" DIA UNC LOCKNUT	1	Z23-251
34.	1" H/D FLAT WASHER	2	Z10-02-25
35.	LOCKING PLATE	2	WD623-060
36.	CHAIN GUIDE	2	WD610-199
37.	SPROCKET	1	Z06-D65-1316S
38.	M6 GRUB SCREW	2	Z28-006
39.	CHAIN TENSIONER BRACKET	1	WD610-CTB1
40.	CHAIN TENSIONER BLOCK ASSY INNER	1	WD610-TBI1
41.	CHAIN TENSIONER BLOCK ASSY OUTER	1	WD610-TBO1
42.	SPRING 14.5MM O.D. X 1.6MM WIRE X 60MM LONG	1	Z07-48
43.	M10 HEX HD SET X 40MM LONG	1	Z26-064S
44.	OILITE BUSH	2	Z06-106
45.	GUARD	1	WD64-021
46.	GUARD	1	WD64-020
47.	M8 HEX HD SETS x 20mm LONG	6	Z26-020S
48.	8mm DIA SPRING WASHER	6	Z12-02-08
49.*	MAGNET	2	D6043
50.*	M6 CSK HD SET x 35mm LONG	2	Z13-132
51.*	6mm DIA FLAT WASHER	2	Z11-02-06
52.*	M6 LOCKNUT	2	Z23-06
53.	SPIRAL PIN	2	Z03-23-062

* DENOTE ADDITIONAL ITEMS REQUIRED FOR AUTOMATIC MACHINES

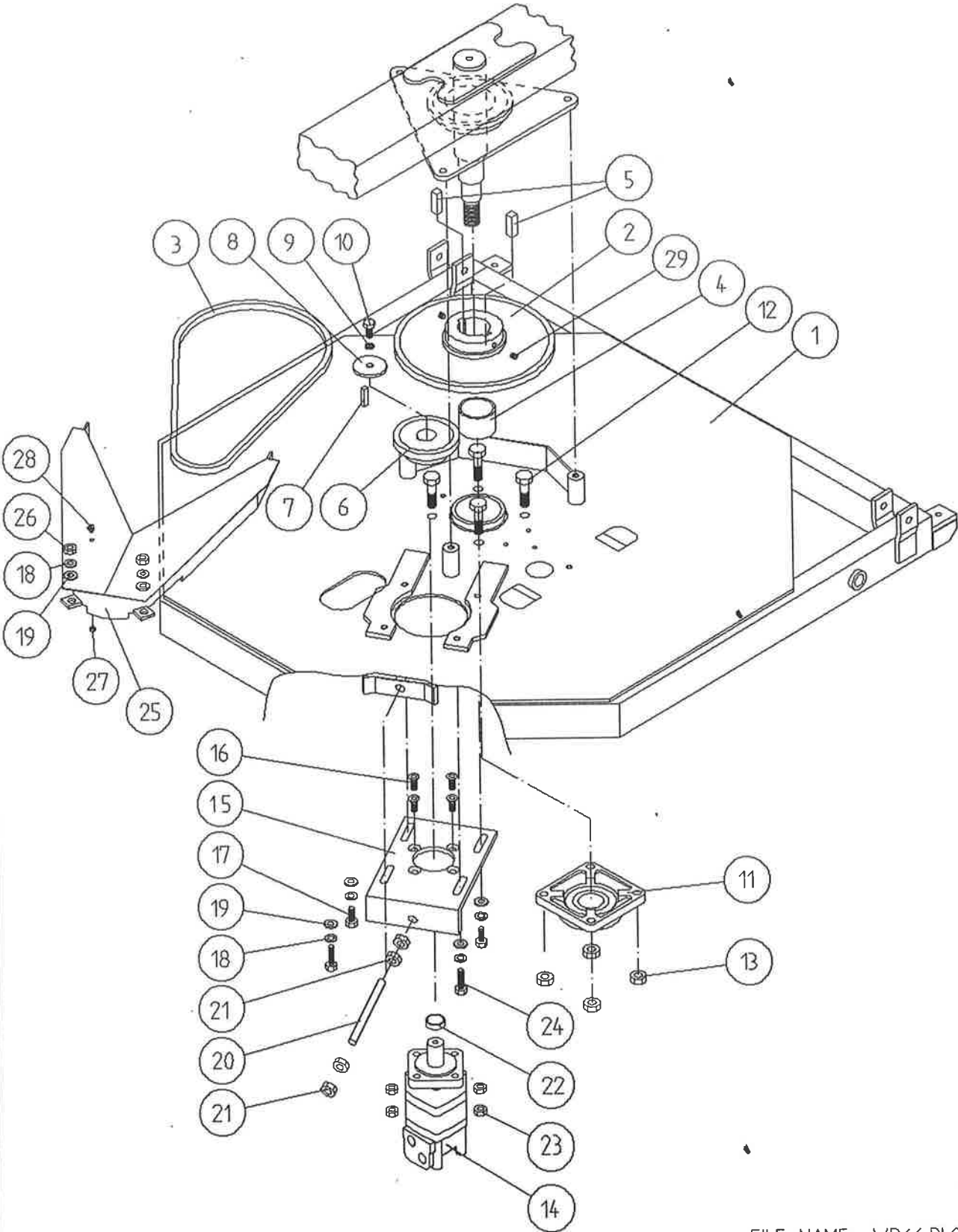
TANCO AUTOWRAP 1060S/1060A MODEL 1996 MAIN ASSEMBLY



TANCO AUTOWRAP 1060S/1060A MODELS (TRAILED) 1996
PARTS LIST

ITEM	DESCRIPTION	QTY	PART-NO.
1.	CHASIS ASSY	1	WD66-CHA
2.	STUB AXLE (LONG)	1	Z04-033
3.	WHEELS	2	Z04-03
4.	WHEELS NUTS	10	M22AWNA
5.	BISSEL PIN	1	WD60-861
6.	M10 HEX NUT	3	Z18-10
7.	HYD. RAM	1	Z01-01-AR687
8.	RAM. BOTTOM PIVOT PIN	1	Z03-02-330
9.	RAM TOP PIVOT PIN	1	Z03-03-50
10.	2" X 1/4" SPLIT PIN	2	Z03-21-29
11.	TIPPING FRAME ASSY	1	WD64-TF
12.	TIPPING FRAME PIVOT PIN C/W GREASE NIPPLE	2	Z03-01-9055
13.	BELT GUIDE ASSEMBLY	1	WD610-BG1
14.	BELT GUIDE ASSEMBLY	1	WD610-BG2
15.	12MM DIA SPRING WASHER	2	Z12-02-12
16.	SCREW JACK ASSEMBLY	1	WD60-JA
17.	M8 HEX HD SETS X 20MM LONG	4	Z26-039S
18.	M8 HEX NUTS	14	Z18-08
19.	8MM DIA FLAT WASHERS (MUD FLAP)	8	Z11-02-081
20.	8MM DIA SPRING WASHERS	12	Z12-02-08
21.	SCRAPER	2	WD60-711
22.	STUB AXLE (SHORT)	1	Z04-032
23.	4MM "R" CLIP	1	Z36-02
24.	RING HITCH ASSY (LONG)	1	WD65-HIT
25.	M16 HEX HD SET X 50MM LONG	4	Z26-124S
26.	M16 LOCKNUTS	4	Z23-16
27.	M10 HEX HD SET X 25MM LONG	2	Z26-060SY
28.	10MM DIA MACHINED FLAT WASHER	2	Z11-02-10
29.	TURN TABLE ASSY	1	WD610-TA2
30.	10mm DIA SPRING WASHER	5	Z12-02-10
31.	SUPPORT WHEELS (4" DIA)	4	Z06-466
32.	AXLE ASSY C/W GREASE NIPPLE	4	Z03-22-AW/AX
33.	M20 LOCKNUTS	4	Z23-20
34.	TURN TABLE COVER PLATE	1	WD60-093
35.	SPACER	8	WD60-198
36.	M12 HEX HD SET x 30mm LONG	2	Z26-082S
37.	FILM TRANSPORT BRACKET	1	WD60-FTB1
38.	CLAMPING PLATE	1	WD60-933
39.	M10 HEX HD BOLT x 140mm LONG	3	Z26-0726B
40.	PLASTIC CAP	2	Z32-08
41.	M10 HEX HD BOLT x 80mm LONG	1	Z26-0691B
42.	M10 LOCKNUT	1	Z23-10

TANCO AUTOWRAP 1996 MODEL TURNTABLE CHAIN DRIVE ASSEMBLY



FILE NAME: WD66 PL9

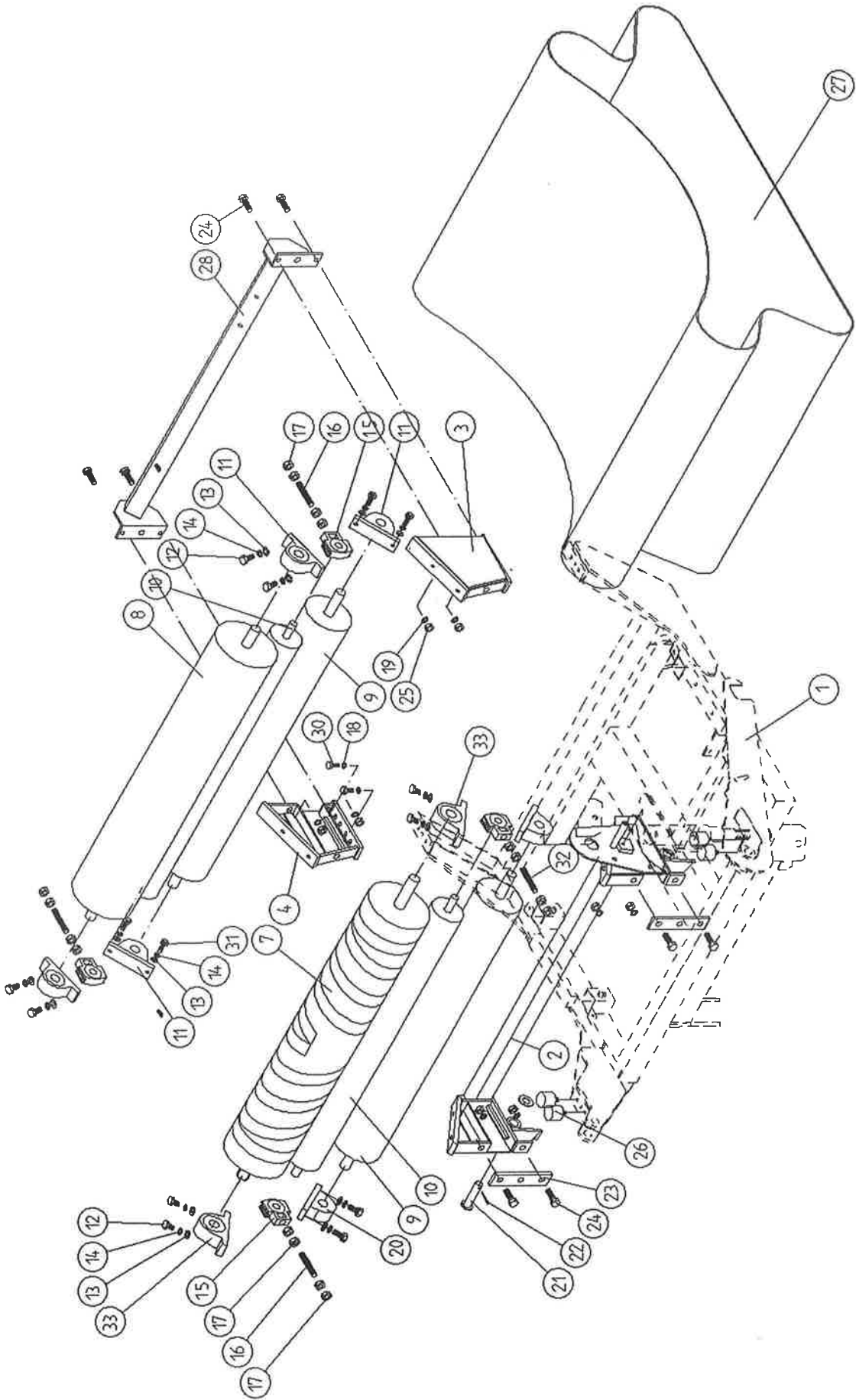
WD66-PL9

TANCO AUTOWRAP 1996 MODEL
TURNTABLE CHAIN DRIVE ASSEMBLY

PARTS LIST

ITEM NO	DESCRIPTION	QTY	PART NO
1	TIPPING FRAME ASSY	1	WD64-TF
2	38 TOOTH x 1" PITCH SPROCKET	1	Z06-D64-38
3	CHAIN 1" PITCH x 54 PITCHES	1	Z09-AW6
4	SPINDLE SPACER	1	WD64-040
5	KEY 5/8" SQ x 50mm LONG	2	WD64-052
6	15 TOOTH x 1" PITCH SPROCKET	1	Z06-I60-046
7	KEY 5/16" SQ x 45mm LONG	1	WD64-053
8	LOCKING COLLAR	1	WD623-071
9	10mm DIA SPRING WASHER	1	Z12-02-10
10	3/8" UNC HEX HD SET x 1" LONG	1	Z27-023S
11	2" DIA FLANGE BEARING C/W CAM LOCK COLLAR	1	Z06-49EC
12	5/8" UNF HEX HD SET x 2" LONG	4	Z31B-064
13	5/8" UNF LOCKNUT	4	Z20-10
14	HYDRAULIC MOTOR	1	Z01-02-RF200
15	HYDRAULIC MOTOR MOUNTING PLATE	1	WD64-001
16	M12 x 50mm ALLEN HD C/S SCREW	4	Z13-5-12X50
17	M12 HEX HD SET x 30mm LONG	4	Z26-082S
18	12mm DIA SPRING WASHER	6	Z12-02-12
19	12mm DIA FLAT WASHER	6	Z10-02-12
20	M16 THREADED BAR x 150mm LONG	1	WD64-038
21	M16 HEX NUTS	4	Z18-16
22	SPACER	1	WI60-093
23	M12 LOCKNUTS	4	Z23-12
24	M12 HEX HD SET x 50mm LONG	2	Z26-086S
25	DRIVE CHAIN GUARD	1	WD66-DCG
26	M12 HEX NUT	2	Z18-12
27	M6 HEX NUT	1	Z18-06
28	M6 90 DEGREE GREASE NIPPLE	1	Z39-65
29	M12 GRUB SCREW x 16mm LONG	2	Z28-012

TANCO AUTOWRAP 1060 MODELS (1996)
 BALE BELT ROLLER MOUNTING BRACKETS



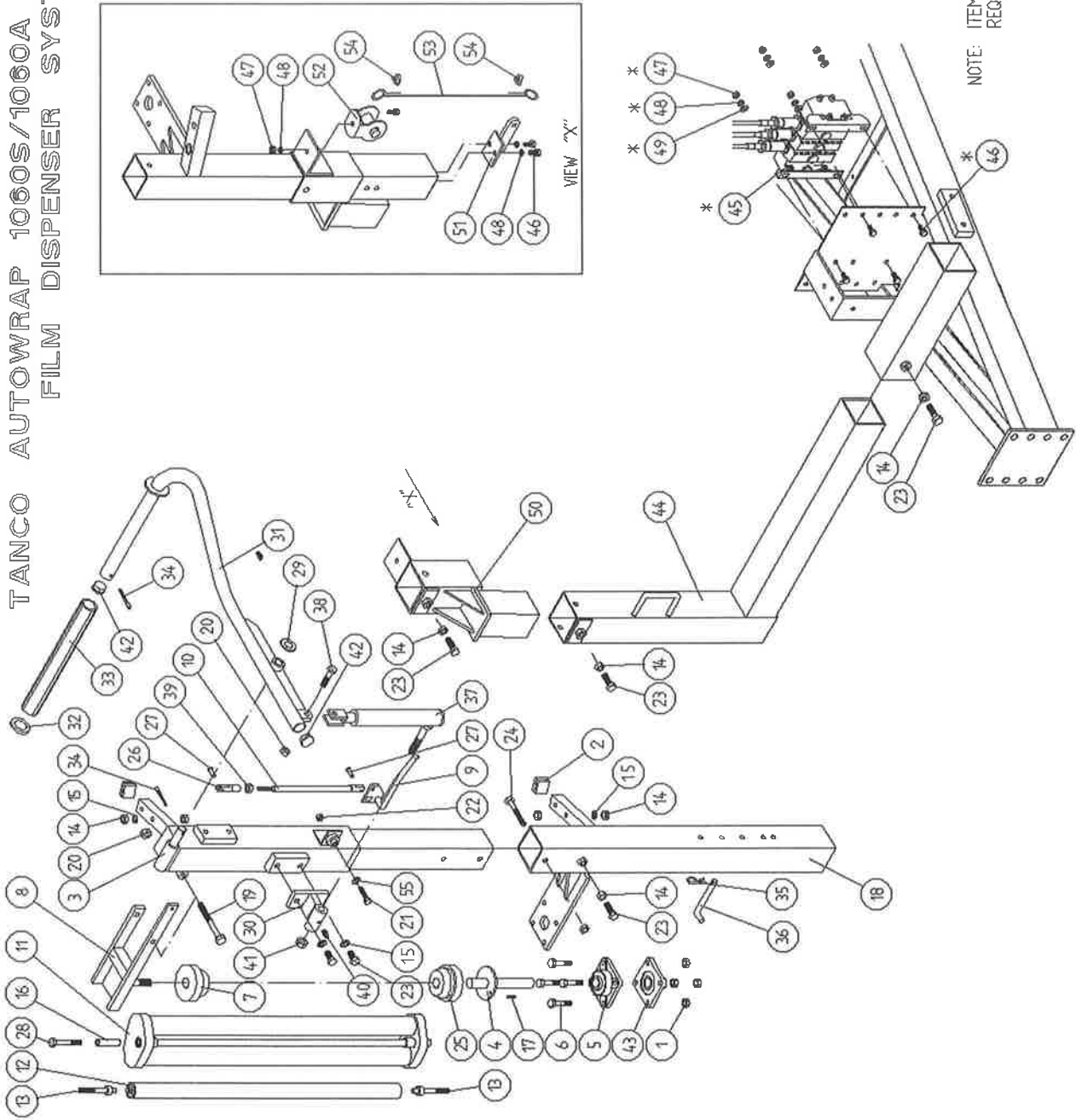
WD61-PL30

TANCO AUTOWRAP 1060 MODELS 1996
BALE BELT ROLLER MOUNTING BRACKETS

PARTS LIST

ITEM NO.	DESCRIPTION	QTY	PART-NO.
1.	TURNTABLE ASSY.	1	WD610-TA2
2.	ROLLER MOUNTING BRACKET (SWIVEL)	1	WD610-RMS1
3.	ROLLER MOUNTING BRACKET (FIXED)	1	WD610-RM1
4.	ROLLER MOUNTING BRACKET (FIXED)	1	WD610-RM2
7.	BIG ROLLER ASSY (DRIVE)	1	WD610-BRD1
8.	BIG ROLLER ASSY (IDLER)	1	WD610-BRI
9.	ROLLER ASSY (IDLER)	2	WD65-BRI
10.	TRACKING ROLLER ASSY (LONG)	2	WD610-TRL
11.	1 1/4" PILLOW BLOCK BEARING	6	Z06-485
12.	M14 HEX HD SET x 45mm LONG	8	Z26-103S
13.	14mm DIA FLAT WASHER	24	Z11-02-14
14.	14mm DIA SPRING WASHER	24	Z12-02-14
15.	SLIDING BEARING STI	4	Z06-47ST
16.	M20 THREADED BAR x 135mm LONG	3	WD610-77
17.	M20 HEX NUTS	16	Z18-20
18.	12mm DIA. SPRING WASHER	12	Z12-02-12
19.	12mm DIA. FLAT WASHER	12	Z11-02-10
21.	SWIVEL BRACKET PIVOT PIN J-50	1	Z03-03-50
22.	2" x 1/4" SPLIT PIN	1	Z03-21-29
23.	RETAINING PLATE	2	WD610-30
24.	M12 HEX HD SETS x 35mm	8	Z26-083S
25.	M12 HEX NUTS	10	Z18-12
26.	BUFFER 50MM DIA x 42mm LONG	4	Z40-235
27.	BALE BELT 1130mm WIDE x 4470mm LONG	1	Z05-02AWV1-93
28.	CUT AND START MOUNTING FRAME	1	WD610-CSM
29.	M14 HEX NUTS	8	Z18-14
30.	M12 HEX HD SETS x 25mm LONG	4	Z26-081S
31.	M14 HEX HD SET x 50mm LONG	8	Z26-104S
32.	M20 THREADED BAR x 105mm LONG	1	WD610-113
33.	40mm DIA PILLOW BLOCK BEARING	2	Z06-48EC-40

TANCO AUTOWRAP 1060S/1060A MODELS 1996
FILM DISPENSER SYSTEM



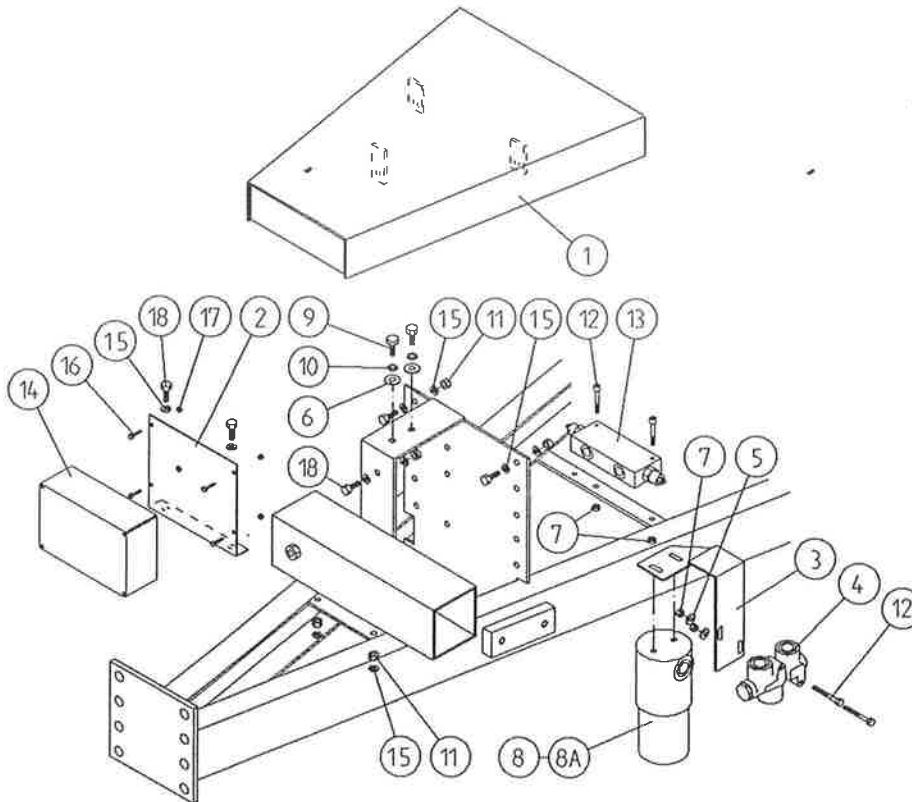
NOTE: ITEMS MARKED WITH * DENOTES ITEMS
REQUIRED FOR 1060S MODELS ONLY

TANCO AUTOWRAP 1060S/1060A MODELS 1996
FILM DISPENSING SYSTEM

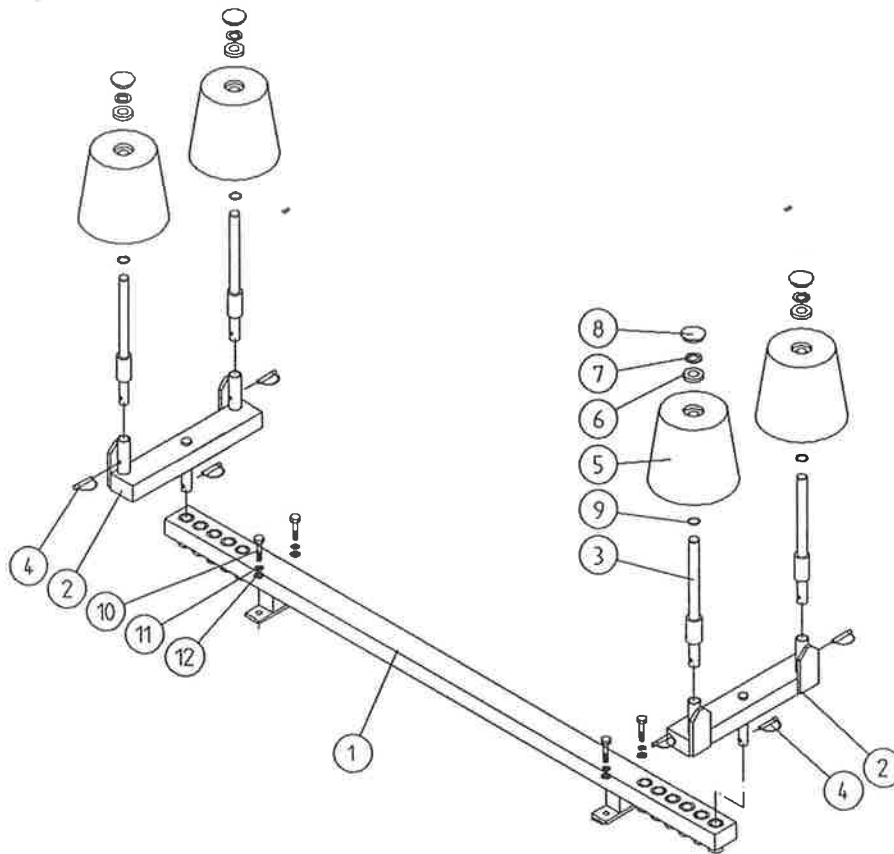
PARTS LIST

ITEM NO.	DESCRIPTION	QTY	PART-NO.
1.	M10 LOCKNUTS	4	Z23-10
2.	PLASTIC CAPS (TO SUIT 40 x 40 x 3 RHS)	2	Z32-07
3.	DISPENSER MOUNTING (UPPER)	1	WD60-DMUH
4.	FILM SPOOL ASSEMBLY	1	WD60-SPO
5.	1" DIA FLANGE BEARING C/W CAM LOCK	1	Z06-48EC
6.	M10 HEX HD BOLT x 50mm LONG	4	Z26-066B
7.	CONE (TOP) C/W BALL BEARINGS	1	Z06-45-01
8.	CLAMP ASSEMBLY	1	WD60-DMCA
9.	LEVER ASSEMBLY	1	WD60-DMLA
10.	LINK ASSEMBLY	1	WD60-DMLK
11.	FILM DISPENSER UNIT MK 9 (5 $\frac{5}{8}$ STRETCH)	1	D6161
12.	SLAVE ROLLER LONG	1	Z06-SR95-L
13.	SLAVE ROLLER PIVOT	2	WD64-SRP
14.	M12 HEX NUTS	8	Z18-12
15.	12mm DIA SPRING WASHER	4	Z12-02-12
16.	SLEEVE	1	D52012-95
17.	1/4" DIA TENSION PIN x 3/4" LONG	1	Z03-20-062
18.	DISPENSER MOUNTING (LOWER)	1	WD60-DMLH
19.	M12 HEX HD BOLT x 130mm LONG	1	Z26-094B
20.	M12 LOCKNUT	3	Z23-12
21.	M8 HEX HD BOLT x 35mm LONG	1	Z26-042S
22.	M8 LOCKNUT	1	Z23-08
23.	M12 HEX HD SET x 30mm LONG	6	Z26-082S
24.	M12 HEX HD BOLT x 100mm LONG	1	Z26-092B
25.	CONE (BOTTOM)	1	Z06-45-02
26.	CLEVIS (M10)	1	Z49-335
27.	PIN (5/16" DIA C/W CLIP)	2	Z49-337
28.	M12 HEX HD BOLT x 80mm LONG	1	Z26-0901B
29.	3/4" DIA FLAT WASHER	1	Z10-02-19
30.	FILM PULL DOWN BRACKET ASSY	1	WD65-FPDB
31.	FILM PULL DOWN ARM ASSY	1	WD65-FPDA
32.	RETAINING WASHER	1	WD60-859
33.	ROLLER	1	WD60-866
34.	2" x 1/4" SPLIT PIN	2	Z01-23-29
35.	4mm "R" CLIP	1	Z36-02
36.	BISSEL PIN (110mm LONG)	1	WD60-874
37.	HYDRAULIC RAM	1	Z01-01-AW25
38.	M12 HEX HD SET x 50mm LONG	1	Z26-086S
39.	5/16" UNF HEX NUT	1	Z15-05
40.	1/8" BSP ST. GREASE NIPPLE	1	Z39-60
41.	M16 LOCKNUT	1	Z23-16
42.	1" GB PLASTIC CAP	2	Z32-14
43.	1" DIA FLANGE BEARING	1	Z06-48
44.	DISPENSER MAST LOWER SUPPORT	1	WD63-DMLH
45.*	3 BANK SPOOL VALVE (DIN)	1	Z01-03-018D
46.*	M8 HEX HD SET x 20mm LONG	3+4	Z26-039S
47.*	M8 HEX NUT	1+4	Z18-08
48.*	8mm DIA SPRING WASHER	3+4	Z12-02-08
49.*	8mm DIA FLAT WASHER	4	Z11-02-081
50.	FILM MAST SOCKET	1	WD610-FMS
51.	WINCH CABLE MOUNTING BRACKET	1	WD610WCM
52.	FILM MAST ADJUSTER	1	Z39-101
53.	3/16" WIRE ROPE x 2'-0" LONG	1	Z39-20
54.	WIRE GRIPS	2	Z39-04
55.	8mm DIA MUD FLAP WASHER	1	Z11-02-081

NOTE: ITEMS MARKED WITH * DENOTES ITEMS REQUIRED FOR 1060S MODELS ONLY

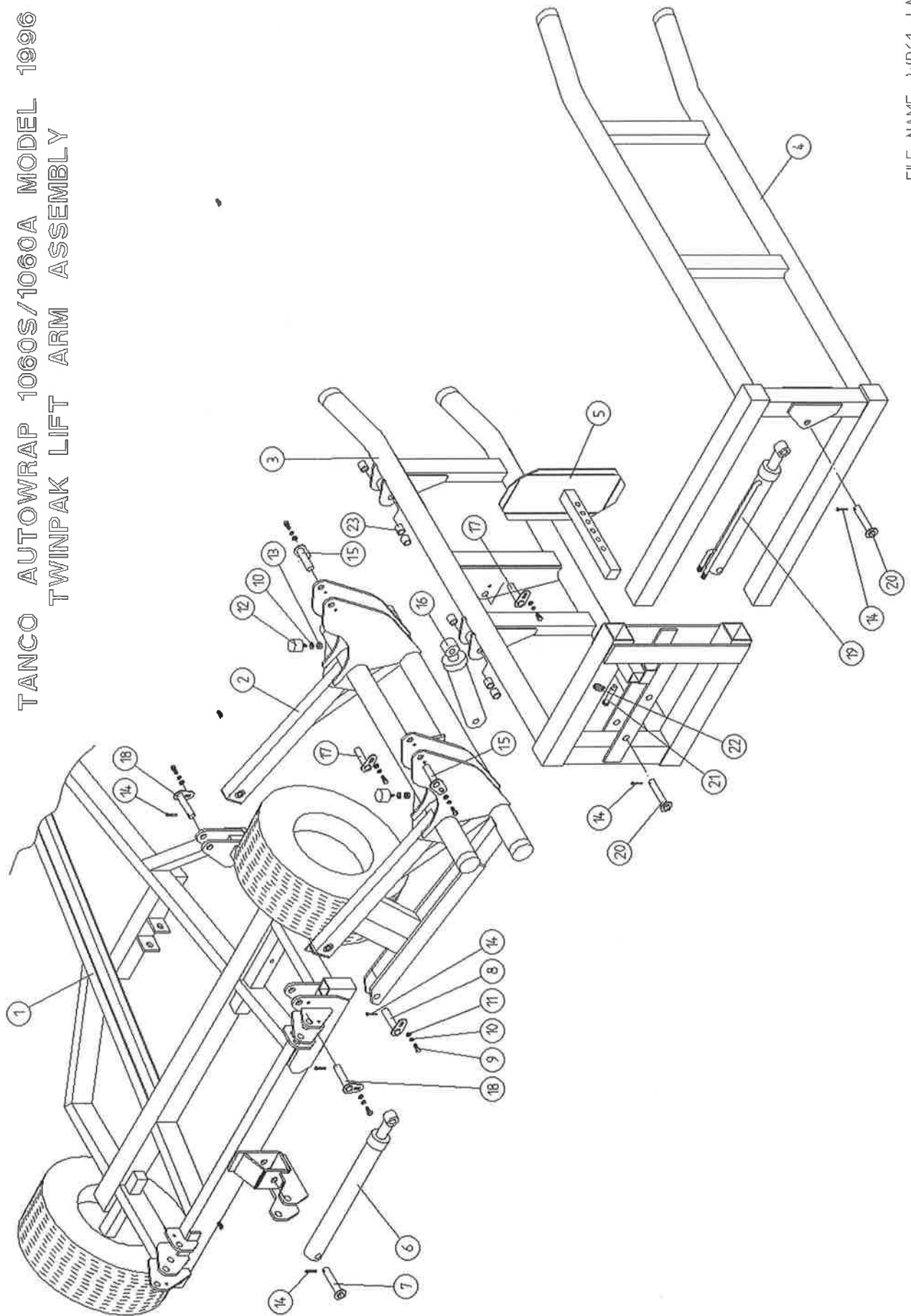
TANCO AUTOWRAP 550A/1060A MODELS (1996)VALVE/JUNCTION BOX/FILTER & DIVERTER VALVE MOUNTING
BRACKET ASSEMBLYPARTS LIST

ITEM NO	DESCRIPTION	QTY	PART-NO.
1.	VALVE COVER PLATE ASSY	1	WD66-VCP
2.	JUNCTION BOX MOUNTING PLATE	1	WD66-041
3.	FLOW DIVIDER MOUNTING BRACKET	1	WD65-FDM
4.	FLOW DIVIDER	1	Z01-03-10-A6
5.	6MM DIA MUD FLAP WASHER	2	Z11-02-061
6.	8MM DIA MUD FLAP WASEHR	2	Z11-02-081
7.	M6 LOCKNUT (NYLOCK)	4	Z23-06
8.	OIL FILTER	1	Z01-24-08
8A.	OIL FILTER ELEMENT	1	Z01-24-08E
9.	M8 HEX HD SET x 25mm	4	Z26-040S
10.	8mm DIA SPRING WASHER	2	Z12-02-08
11.	M8 LOCKNUTS	6	Z23-08
12.	M6 ALLEN HD SOCKET SCREW x 45mm	4	Z13-020-50
13.	OVER-CENTRE VALVE	1	Z01-03-10-A8
14.	JUNCTION BOX	1	ZDG-JB2
15.	8mm DIA FLAT WASHER	12	Z10-02-08
16.	M4 ALLEN HD SOCKET SCREW x 16mm	4	Z26-006
17.	M4 LOCKNUT	4	Z23-04
18.	M8 HEX HD SET x 20mm	6	Z26-039S

TANCO AUTOWRAP 1060 MODELS 1996END ROLLER MOUNTING BRACKET ASSYPARTS LIST

ITEM NO	DESCRIPTION	QTY	PART-NO.
1.	CROSS BEAM ASSY	1	WD610-CBA
2.	END ROLLER MOUNTING BRACKET	2	WD610-RMB
3.	END ROLLER SHAFT ASSY	4	WD610-RSA
4.	10mm DIA "D" LINCH PIN	6	Z38-03
5.	SIDE ROLLER	4	Z06-AWR
6.	BEARING 25mm I.D.	4	Z06-AWRB-93
7.	THRUST WASHER	4	WD60-292
8.	PLASTIC CAP	4	Z06-AWRC
9.	CIRCLIP	4	Z28-525
10.	M12 HEX HD SET x 30mm LONG	4	Z26-082S
11.	12mm DIA SPRING WASHER	4	Z12-02-12
12.	12mm DIA FLAT WASHER	4	Z11-02-10

TANCO AUTOWRAP 1060S/1060A MODEL 1996
TWINPAK LIFT ARM ASSEMBLY

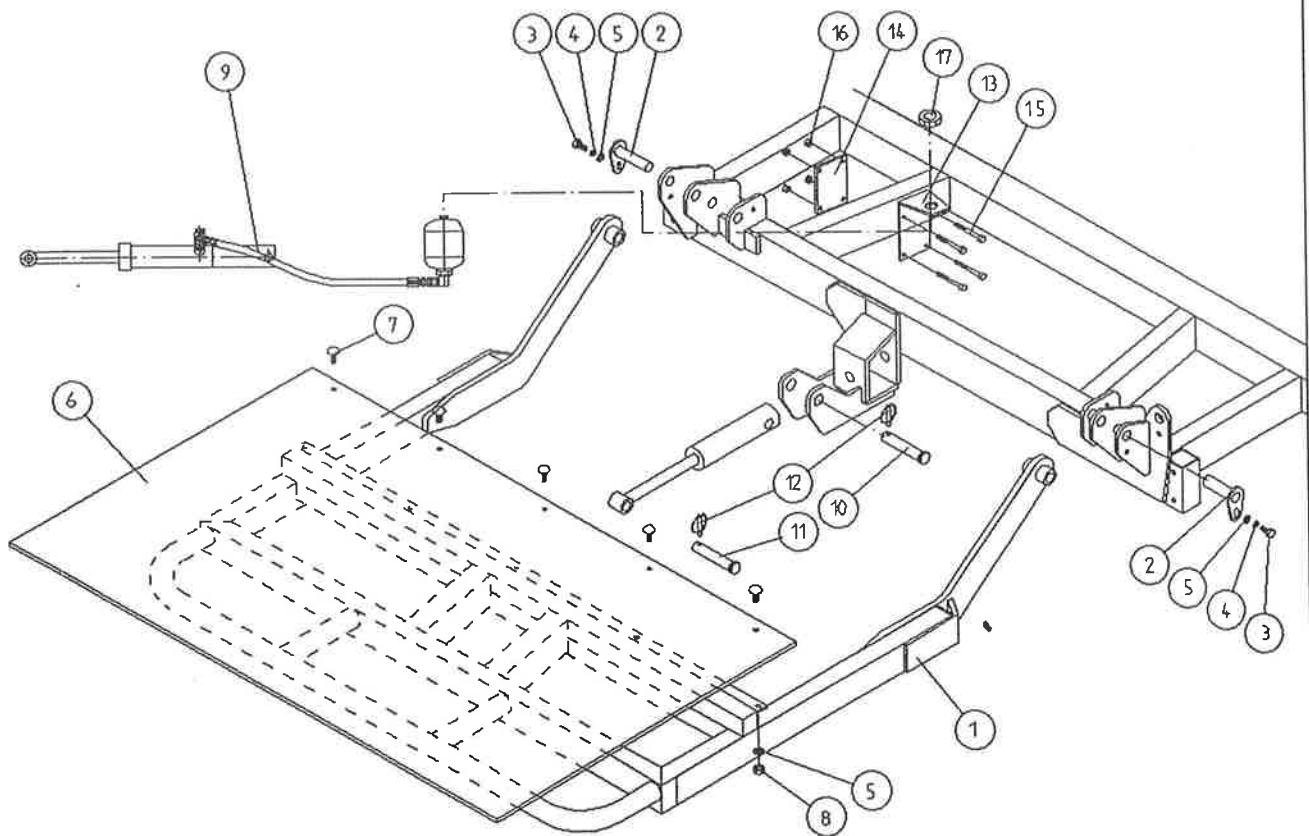


WD610-LAS

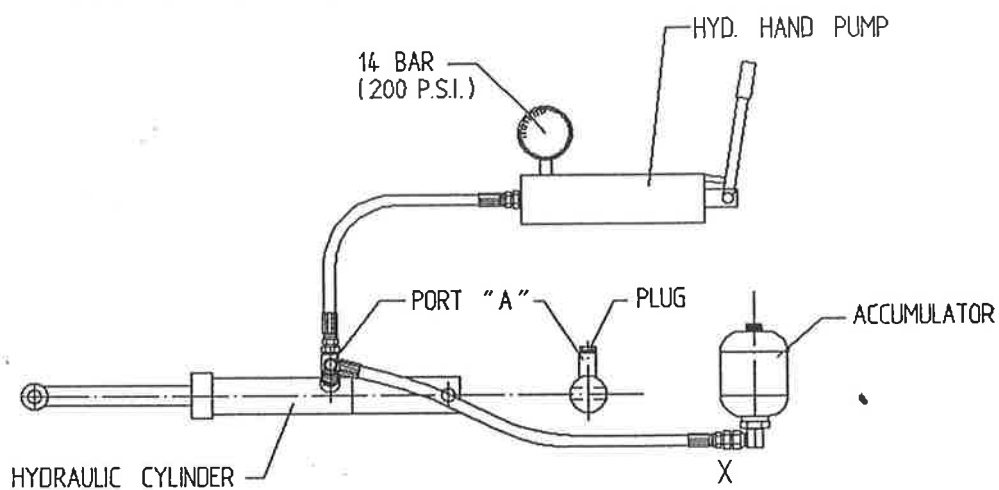
TANCO AUTOWRAP 1060S/1060A MODELS 1996
 "TWIN-PAK" LIFT ARM ASSY
 PARTS LIST

ITEM NO.	DESCRIPTION	QTY	PART-NO
1.	CHASSIS ASSY	1	WD60-CHA
2.	MAIN ARM ASSY	1	WD610-TNA
3.	INNER FRAME ASSY	1	WD610-TIA
4.	OUTER FRAME ASSY	1	WD610-TOA
5.	BALE STOP ASSY	1	WD610-LAS1
6.	HYDRAULIC RAM (MAIN ARM)	1	Z01-01-AW
7.	RAM BOTTOM PIVOT PIN	1	Z03-02-330
8.	RAM TOP PIVOT PIN	1	Z03-01-797
9.	M10 HEX HD SET x 20mm LONG	7	Z26-060ST
10.	10mm DIA SPRING WASHER	9	Z12-02-10
11.	10mm DIA FLAT WASHER	7	Z11-02-10
12.	BUFFER 50mm DIA x 40mm LONG	2	Z40-20
13.	M10 HEX NUT	2	Z18-10
14.	1/4" DIA SPLIT PIN x 2" LONG	7	Z03-21-29
15.	INNER FRAME PIVOT PIN	2	Z03-02-192
16.	HYDRAULIC RAM (INNER FRAME)	1	Z01-01-DA980
17.	RAM TOP/BOTTOM PIVOT PIN	2	Z03-01-796
18.	MAIN FRAME PIVOT PIN C/W GREASE NIPPLE	2	Z03-01-905
19.	HYDRAULIC RAM (OUTER FRAME)	1	Z01-01-140S
20.	RAM TOP/BOTTOM PIVOT PIN	2	Z03-02-54
21.	BALE STOP RETAINING PIN	1	Z03-04-73
22.	7/16" DIA LINCH PIN	1	Z03-22-06
23.	TENSION BUSH 1 1/4" x 1" x 30mm LONG	6	Z03-20-014

TANCO AUTOWAP 1996 MODEL HYDRAULIC BALE RAMP



INSTRUCTIONS FOR RECHARGING HYDRAULIC CYLINDER



1. REMOVE PLUG FROM PORT "A".
2. CONNECT HOSE FROM HYD. HAND PUMP TO PORT "A".
3. CHARGE CYLINDER TO A PRESSURE OF 14 BAR (200 P.S.I.)
4. BLEED AIR FROM SYSTEM BY SLACKENING HOSE CONNECTION AT BASE OF ACCUMULATOR MARKED X. RETIGHTEN CONNECTION.
5. REMOVE PUMP HOSE FROM PORT "A" AND REFIT PLUG.

FILE NAME WD66-PLZE

TANCO AUTOWRAP 1996 MODEL
HYDRAULIC BALE RAMP

PARTS LIST

ITEM	DESCRIPTION:	QTY:	PART NO:
1	HYDRAULIC BALE RAMP ASSY	1	WD65-HBRF
2	RAMP MAIN PIVOT PIN C/W GREASE NIPPLE	2	Z03-01-905
3	M10 HEX HD SET X 20mm LONG TUFLOCK	2	Z26-060ST
4	10mm DIA MACHINED FLAT WASHER	2	Z11-02-10
5	10mm DIA SPRING WASHER	12	Z12-02-10
6	BALE MAT	1	Z05-02-BRH
7	M10 X 30mm LONG CUP HD.SQ BOLTS	5	Z13-112
8	M10 HEX NUTS	5	Z18-10
9	HYDRAULIC RAM C/W ACCUMULATOR	1	Z01-01-AWD
10	SPAREX PIN	1	Z03-04-74
11	SPAREX PIN	1	Z03-04-73
12	7/16" DIA LINCH PIN	2	Z03-22-06
13	ACCUMULATOR MOUNTING PLATE	1	WD65-AMP
14	CLAMPING PLATE	1	WD65-231
15	M8 HEX HD BOLT X 80mm LONG	4	Z26-050B
16	M8 LOCKNUT	4	Z23-08
17	M28 X 1.5 PITCH HEX NUT	1	Z18-28

FAULT FINDING

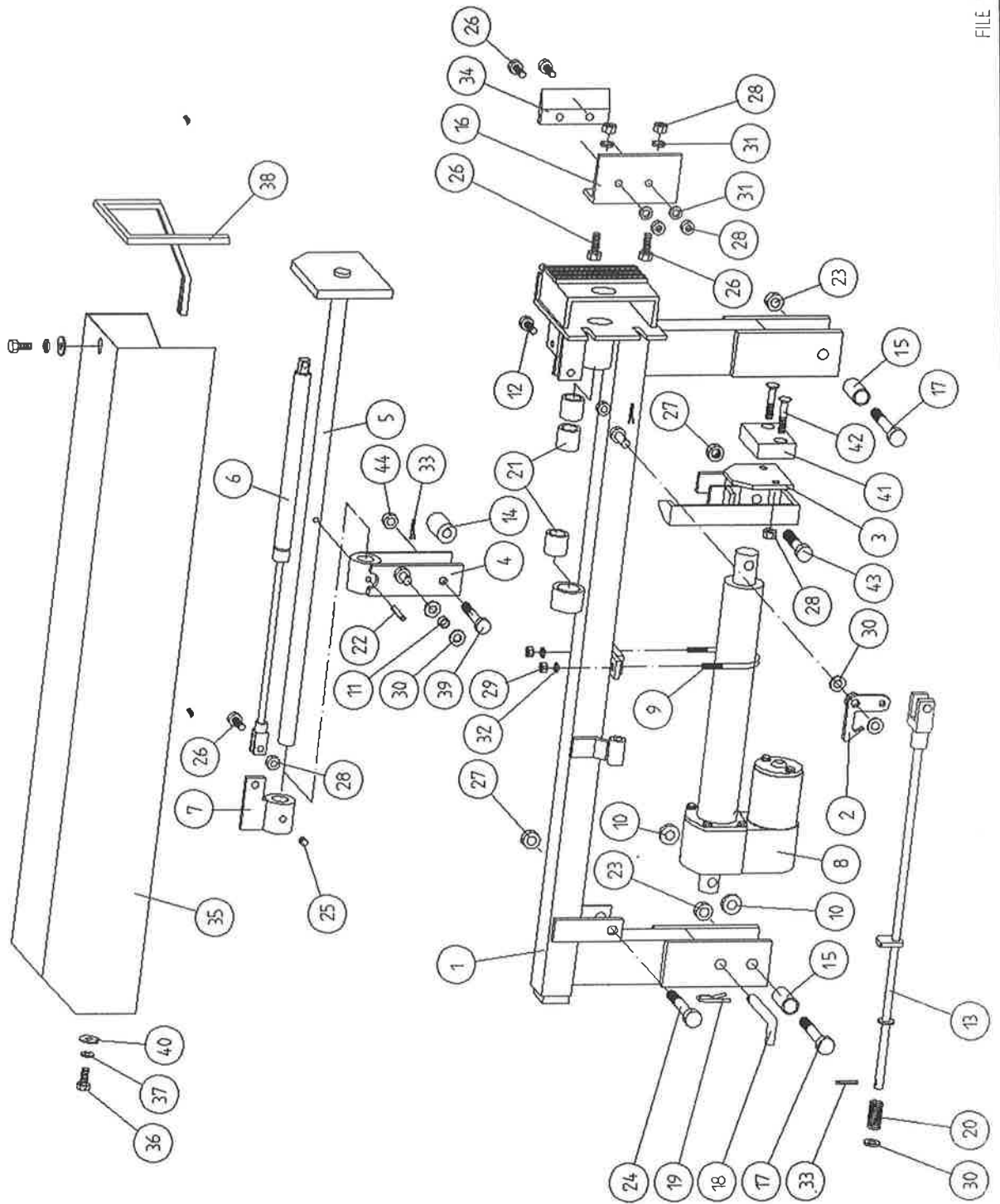
PROBLEMS.

REMEDY.

1. Drive Roller and Bale belt not driving
Check and replace shear Pins in sprocket on drive roller.
2. Film Breaking
Wash off dispenser and slave rollers. Change roll of film. Use recommended films only.
3. Film not wrapping evenly on bale.
Adjust film mast so centre of film roll is aligned with centre of bale .
4. Film Tearing on Ramp.
Check for sharp edges and remove.
5. Bale Skidding on Ramp.
Fit Hessian Bag or piece of carpet to Ramp.
6. Film Dispenser not Pre-Stretching Film.
Check that both Rollers turn when one is turned by hand. If not, fit new gears or replace unit.
7. Tyres coming off 4" platform Support Wheels.
Replace Wheels - Reduce speed below 30 r.p.m. - Do not grease path of wheels on platform. Check that bale does not get trapped between arms and turntable when being loaded.

If this happens lower arm and start again.
8. Hydraulic Bale Ramp not returning to raised position after tipping off bale.
See instructions for recharging hydraulic cylinder.
9. Bale Belt Tracking Adjustment
 - (i) Ensure vertical rollers (plastic) are in tight on the bale. Remember that the bale will reduce in size during wrapping and, on the round bales in particular, the corners will become rounded so that the bale will tend to move sideways due to centrifugal forces. Now, if the plastic rollers are too far apart, the bale will move against one of the plastic rollers causing the belt to move in the opposite direction. Always adjust the vertical plastic rollers so that they keep the bale central on the belt.
 - (ii) Adjust bale stop on lift arm so that bale is loaded centrally onto platform.
 - (iii) Check that bale belt is fitted so arrow points in direction of travel.
 - (iv) Check that both 8" rollers underneath the bale belt are parallel to each other. Remember the golden rule - a belt will always move up a slope: So, if the belt continually moves to our side, adjust idler roller to a narrower setting on the opposite side to which the belt travels.
 - (v) Check that gripface strips are securely fixed to the roller and have not moved out of alignment.
 - (vi) Check that is the same measurement each side by running a string around the belt and measuring it. If one side is longer than the other replace the belt.

TANCO AUTOWRAP CUT AND START UNIT (1996) MAIN ASSEMBLY



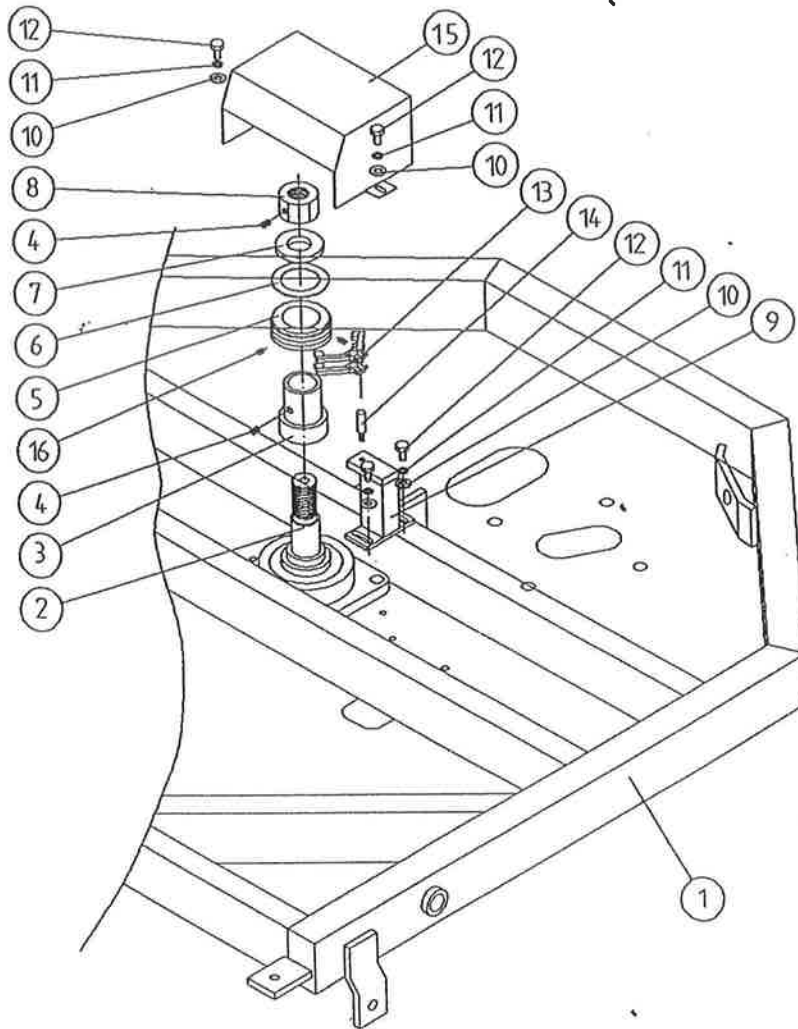
FILE NAME W064PL16

**TANCO AUTOWRAP
CUT AND START UNIT (1996)
PARTS LIST**

ITEM NO	DESCRIPTION	QTY	PART-NO.
1.	MAIN MOUNTING FRAME ASSY	1	WD605-MF1
2.	LATCH ASSY.	1	WD605-LA
3.	PUSH PLATE / POINTER ASSY.	1	WD605-PPP
4.	GUIDE ASSY	1	WD605-GD1
5.	PLUNGER ASSY	1	WD605-PL1
6.	GAS SPRING	1	Z07-47
7.	GAS SPRING MOUNTING BRACKET	1	WD605-GSM
8.	WARNER LINEAR ACTUATOR D11 10B5 08	1	ZD605-510
9.	"U" BOLT	1	WD605-45
10.	SPACER 1" X OD X 1/2" ID X 6mm LONG	2	WD605-65
11.	SLEEVE 1/2" DIA O.D. X 13/32" DIA I.D.	1	WD605-47
12.	M8 HEX HD SET X 35mm LONG	1	Z26-042S
13.	TRIGGER ASSEMBLY	1	WD605-TRG
14.	COLLAR 1" DIA BRIGHT RD. X 41.5mm LONG	1	WD605-51
15.	SPACER	1	WD605-100
16.	BLADE GUARD/MOUNTING BRACKET	1	WD605-105
17.	M12 HEX HD BOLT X 80mm LONG	2	Z26-0901B
18.	BISSEL PIN	1	Z03-22-AW100
19.	4mm "R" CLIP	1	Z36-02
20.	SPRING 16mm O.D X 1.5mm WIRE X 48mm LONG	1	Z07-34
21.	OILITE OIL RETAINING BUSH 1 1/8" O.D.	3	Z06-105
22.	1 1/2" X 1/4" DIA TENSION PIN	1	Z03-20-07
23.	M12 LOCKNUTS	2	Z23-12
24.	M12 HEX HD BOLT X 65mm	1	Z26-0882B
25.	M8 GRUB SCREW	1	Z28-008
26.	M8 HEX HD SET X 25mm	3	Z26-040S
27.	M12 BINX LOCKNUT	4	Z23-12BX
28.	M8 LOCKNUT	8	Z18-08
29.	M6 LOCKNUT (NYLOCK)	2	Z23-06
30.	10mm DIA FLAT WASHER	10	Z11-02-10
31.	8mm DIA FLAT WASHER	5	Z11-02-08
32.	6mm DIA FLAT WASHER	2	Z11-02-06
33.	3mm DIA SPLIT PIN	2	Z03-21-02
34.	BLADE	1	WD605-104
35.	MAIN GUARD	1	WD605-MG
36.	M8 HEX HD SET X 20mm LONG	2	Z26-039S
37.	8mm DIA SPRING WASHER	9	Z12-02-08
38.	EDGING STRIP	1	Z44-12
39.	M10 HEX HD SET X 20mm	2	Z26-060S
40.	8mm DIA FLAT WASHER 1" O.D.	4	Z11-02-081
41.	PACKER	1	WD605-133
42.	M8 X 40 COUNTER SUNK BOLT	2	Z13-5-08X40
43.	M12 HEX HD BOLT X 50mm LONG	1	Z26-086B
44.	M10 LOCKNUT	1	Z23-10

WD645-PL70

TANCO AUTOWRAP CUT AND START UNIT (1996)
SLIP RING ASSY.

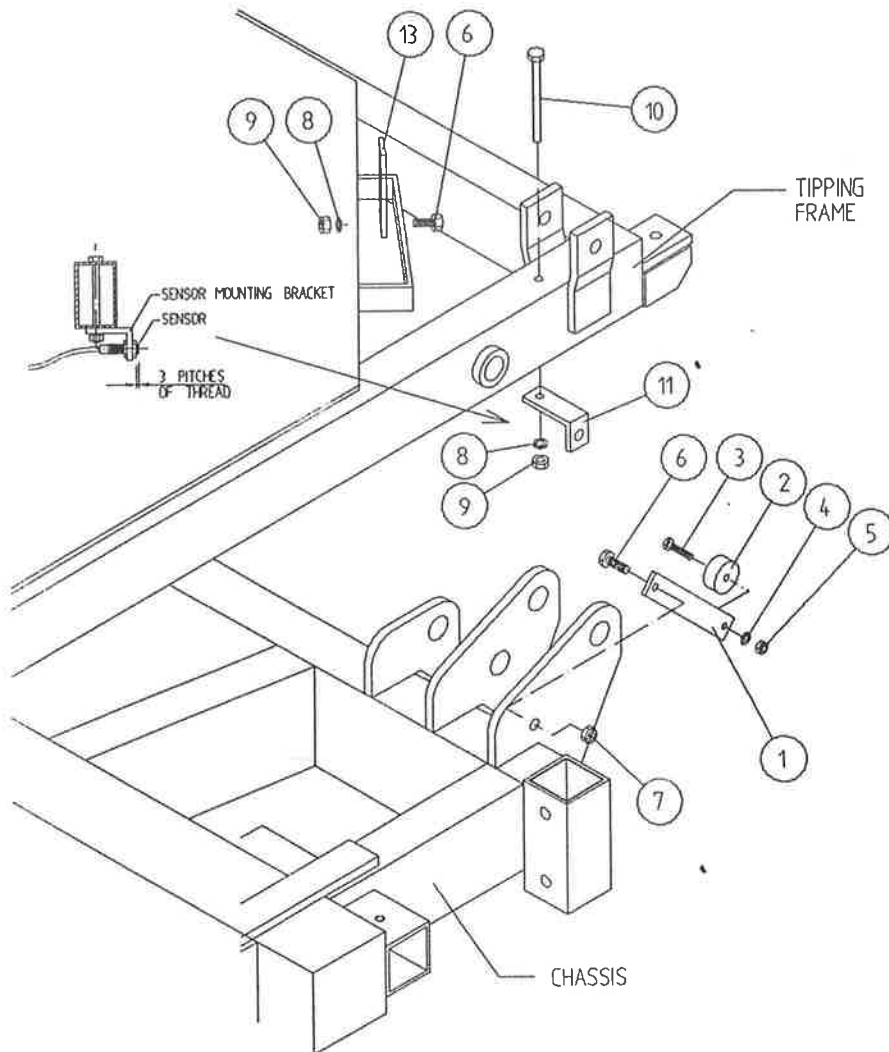


PARTS LIST

<u>ITEM NO.</u>	<u>DESCRIPTION</u>	<u>QTY.</u>	<u>PART-NO.</u>
1.	UNDERSIDE OF TIPPING FRAME	1	WD64-TF
2.	TURNTABLE CENTRE SHAFT	1	WD64-002
3.	SLIP RING MOUNTING SLEEVE	1	WD605-161
4.	M8 GRUB SCREW x 6 mm LONG	2	Z28-007
5.	SLIP RING ASSY.	1	ZD605-308
6.	INSULATING RING	1	ZD605-350
7.	LOCKING COLLAR	1	WD60-770
8.	1 1/4" UNC HEX NUT	1	Z18-300
9.	SLIP RING MOUNTING BRACKET ASSY	1	WD605-BMB
10.	10mm DIA FLAT WASHER 1" O.D.	4	Z11-02-101
11.	10mm SPRING WASHER	4	Z12-02-10
12.	M10 HEX HD SET x 20mm	4	Z26-060S
13.	BRUSHES	2	ZD605-306
14.	INSULATOR SLEEVE	1	ZD605-302
15.	SLIP RING GUARD ASSY	1	WD605-SRG
16.	M5 GRUB SCREW	2	Z28-005

TANCO AUTOWRAP CUT AND START UNIT 1996

SENSOR AND MAGNET MOUNTING BRACKETS



PARTS LIST

ITEM NO.	DESCRIPTION	QTY.	PART-NO.
1.	MAGNET MOUNTING BRACKET	1	WD605-165
2.	MAGNET	1	D6043
3.	M6 HEX HD SET x 30mm LONG	1	Z26-022S
4.	6mm DIA FLAT WASHER	1	Z11-02-06
5.	M6 LOCKNUT	1	Z23-06
6.	M8 HEX HD SET x 25mm LONG	2	Z26-040S
7.	M8 LOCKNUT (NYLOCK)	1	Z23-08
8.	8mm DIA SPRING WASHER	2	Z12-02-08
9.	M8 HEX NUT	2	Z18-08
10.	M8 HEX HD SET x 100mm LONG	1	Z26-057S
11.	SENSOR MOUNTING BRACKET	1	WD605-58
12.	SENSOR MOUNTING FLAT	1	WD605-164

TANCO AUTOWRAP AUTOMATIC MODELS
Cut and start
Fault Finding Summary.

This summary is to be read in conjunction with operators handbook.

Note: It has been found that most faults can be attributed to a bad power supply. Therefore it is essential that power supply be taken directly from battery terminals, ensuring correct polarity.

Operating voltage is 10V D.C. (under load) to 13.5V D.C.

Problem

Proposed Remedy

- | | |
|---|--|
| (1) Bale Wrap monitor does not power on. | (a) Check polarity on connections to battery terminals.

(b) Check fuse, in power supply cable to controller. |
| (2) Plunger does not come out after 2 revolutions of turntable. | (a) Check operation in manual mode to ensure that plunger travels in and out. If the plunger does not travel in and out, check all connections from six pin plug, through slip ring to linear actuator.

(b) Check fuse in power supply cable to junction box and replace if necessary. |
| (2) (i) Buzzer sound continuously "bleep" bleep" and bale wrap monitor does not count above 2 revs. | (c) Check voltage while operating in manual mode. This voltage should be no lower than 10V D.C. (under load). Also check connections on battery terminals.

(d) Check that bale wrap monitor is counting revolutions and if not check that turntable sensor is within 6mm of magnet on turntable.

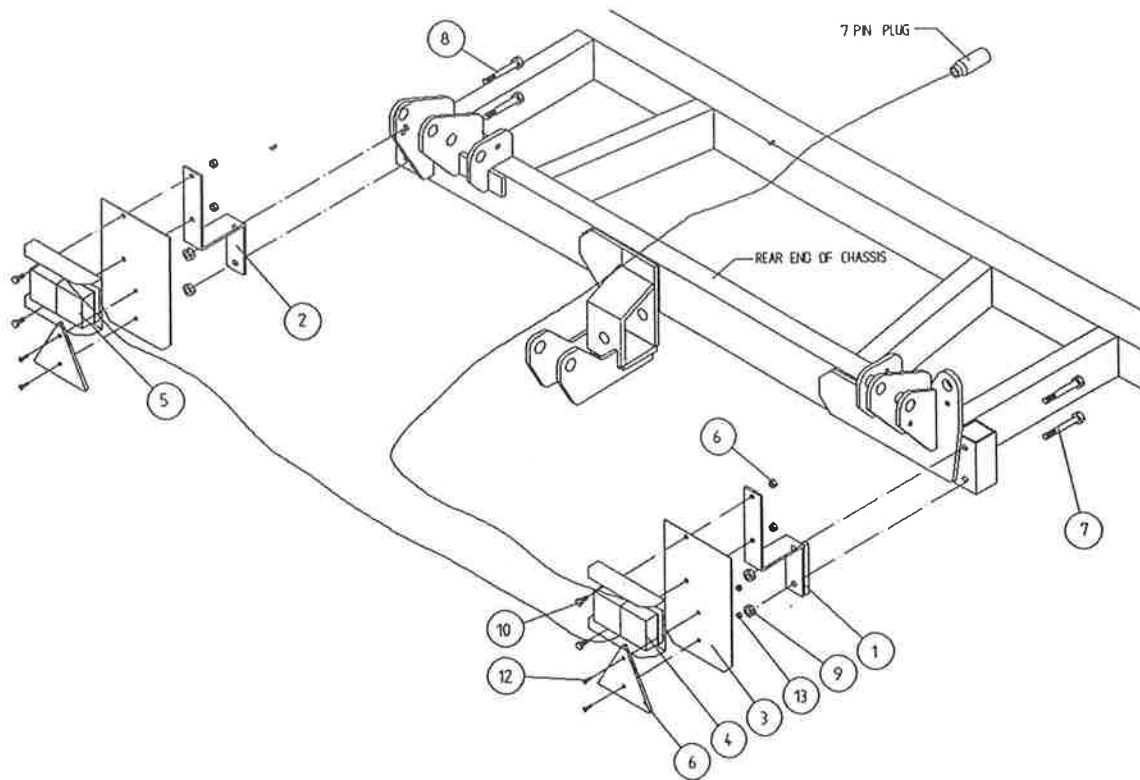
(e) Carry out continuity check of turntable sensor, by taking reading across 2 & 3 in six pin plug. |
| (3) Plunger snaps closed after about 7 to 8 turntable revolutions. This is caused by the Linear Actuator not stopping in park position. | (a) Reduce setting for programme (1), which indicates the number of seconds required to reverse to park position. Setting can be altered in increments of 0.5 sec. In the park position there should be 5mm to 12mm clearance between cam on push plate assy and latch trigger. |
| (4) When machine is tipped plunger does not close. | (a) Check clearance between tip sensor on back of tipping frame and magnet of 5mm to 6mm.

(b) Check that tip sensor passes magnet, if not adjust magnet position. |

OPTIONS AVAILABLE

The available options are shown on following pages, some of which are only available as a factory fitted option.

**TANCO AUTOWRAP TRAILED MODELS
LIGHTING KIT**



ITEM NO	DESCRIPTION	QTY	PART-NO.
1.	LIGHT MOUNTING BRACKET RHS	1	WD60-LMB
2.	LIGHT MOUNTING BRACKET LHS	1	WD60-899
3.	LIGHT MOUNTING PLATE	2	WD60-898
4.	LIGHT CLUSTER RHS	1	Z05-30R
5.	LIGHT CLUSTER LHS	1	Z05-30L
6.	TRIANGULAR REFLECTOR	2	Z04-62
7.	M12 HEX HD BOLT X 100 LONG	2	Z26-092B
8.	M12 HEX HD BOLT X 90 LONG	2	Z06-091B
9.	M12 LOCKNUT	4	Z23-12
10.	M8 HEX HD SET X 20 LONG	4	Z26-39S
11.	M8 LOCKNUT	4	Z23-08
12.	M6 CHEESE HEAD SET X 20 LONG	4	Z13-15
13.	M6 LOCKNUT	4	Z23-06

EC DECLARATION OF CONFORMITY

according to Directives 89/392/336/EEC
as amended

Manufacturer

TANCO ENGINEERING CO. LTD.
BAGENALSTOWN
CO. CARLOW
IRELAND

Certifies that the following product:

AUTOWRAP

MODEL 1060 AIP

SERIAL No. D2000 - D3000

To which this declaration relates, corresponds to the essential requirements of the Directive 89/392/336/EEC as amended.

To conform to these essential health and safety requirements, the provisions of the following harmonized standards were particularly considered:

EN 292 - 1,2 , EN 294 , EN 1152 , prEN 703 , prEN 811 , prEN 1553 , prEN 982.

DATE 01-01-96

SIGNATURE

Alfred A Cox
ALFRED A. COX, TECHNICAL DIRECTOR