

TANCO AUTOWRAP

400A/500A MODEL 1994

~~**OPERATORS HANDBOOK**~~

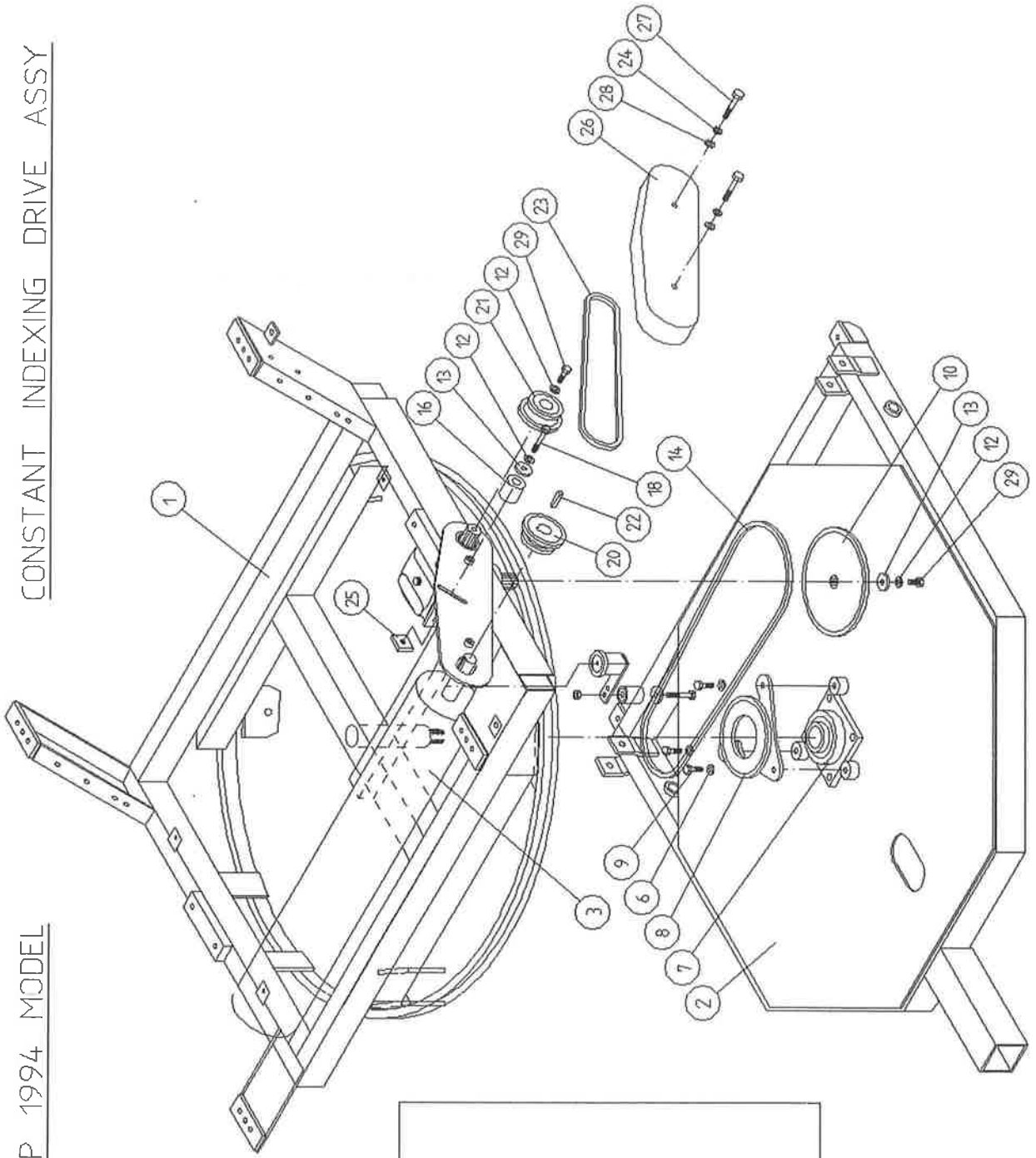
~~**AND**~~

PARTS LIST

WD65-400-A / 500-A-M0594

TANCO AUTOWRAP 1994 MODEL

CONSTANT INDEXING DRIVE ASSY



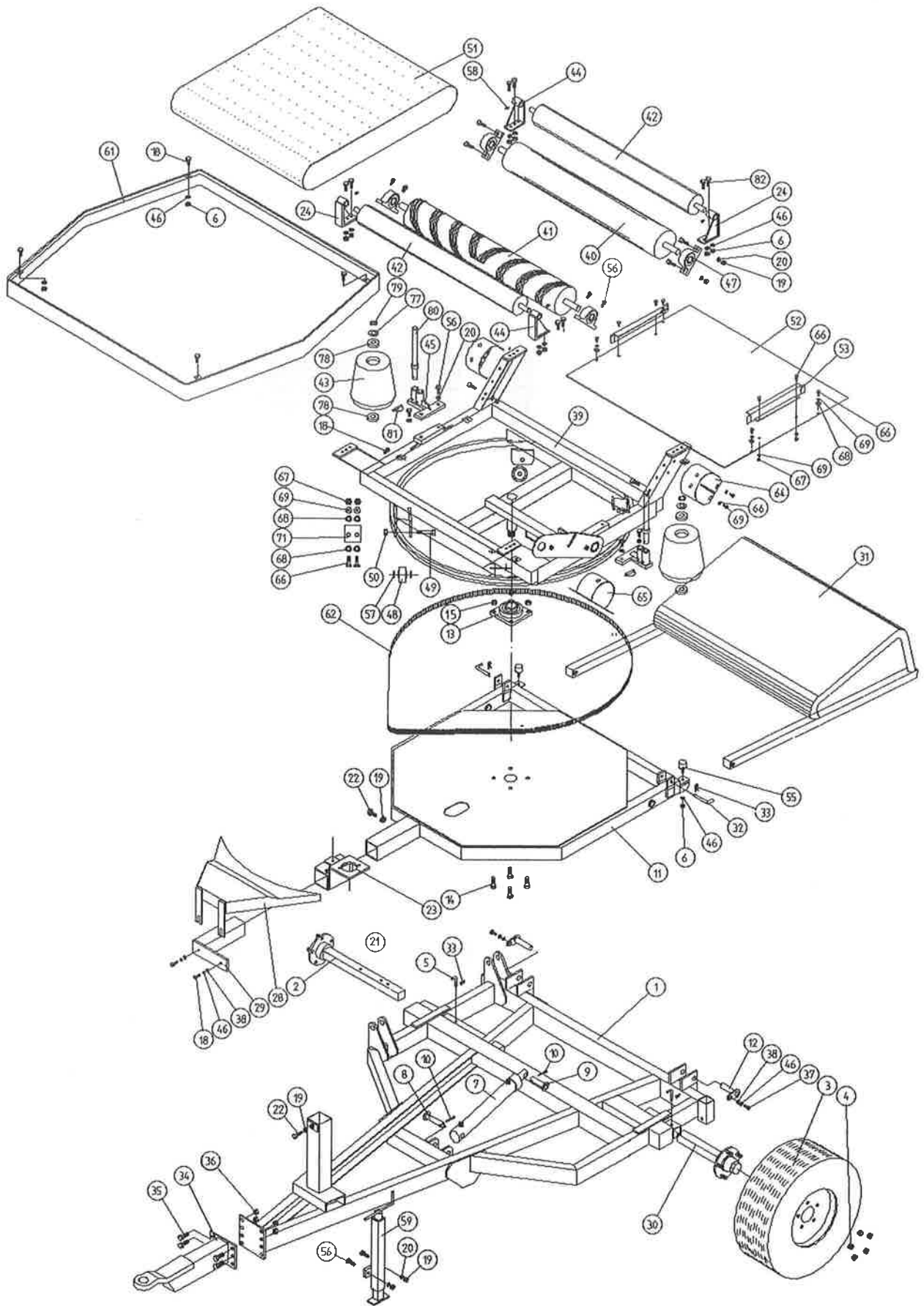
WD60-PL4

TANCO AUTOWRAP
CONSTANT INDEXING DRIVE ASSEMBLY

PARTS LIST

| ITEM NO. | DESCRIPTION | QTY. | PART-NO |
|----------|---|------|---------------|
| 1 | TURNTABLE ASSY. | 1 | WD60-TAC |
| 2 | TIPPING FRAME ASSY. | 1 | WD60-TFC |
| 3 | DRIVE ROLLER ASSY. | 1 | WD65-BRD |
| 4 | GEAR BOX | 1 | Z01-25-300 |
| 5 | M12 HEX HD SET x 30mm LONG | 4 | Z26-082S |
| 6 | 12mm DIA SPRING WASHER | 7 | Z12-02-12 |
| 7 | 2" DIA FLANGE BEARING | 1 | Z06-49EC |
| 8 | CENTRE SPROCKET ASSY 27 TOOTH | 1 | WD60-CSA |
| 9 | M12 HEX HD SET x 25mm LONG | 3 | Z26-081S |
| 10 | 36 TOOTH SPROCKET | 1 | Z06-D65-36S |
| 11 | M10 HEX HD SET x 25mm LONG | 1 | Z26-0611S |
| 12 | 10mm DIA SPRING WASHER | 4 | Z12-02-10 |
| 13 | RETAINING COLLAR | 3 | WD623-071 |
| 14 | CHAIN 3/4" PITCH X 87 PITCHES | 1 | Z09-AW-4 |
| 15 | ROSTA TENSIONING UNIT ARM | 1 | Z06-454 |
| 16 | CHAIN TENSIONER | 1 | WD65-CT |
| 17 | M10 HEX HD BOLT x 65MM LONG | 1 | Z26-0671B |
| 18 | M10 HEX HD BOLT x 80MM LONG | 1 | Z26-0691B |
| 19 | M10 LOCKNUT | 1 | Z23-10 |
| 20 | SPROCKET DOUBLE SIMPLEX 13T/16T KEYED | 1 | Z06-D65-1316K |
| 21 | SPROCKET DOUBLE SIMPLEX 13T/16T SPLINED | 1 | Z06-D65-1316S |
| 22 | KEY 5/16" x 5/16" x 32mm LONG | 1 | WD623-K32 |
| 23 | CHAIN 3/4" PITCH X 62 PITCHES | 1 | Z09-AW-3 |
| 24 | 1/2" DIA STAR WASHER | 1 | Z10-01-121 |
| 25 | LOCKING FLAT | 1 | WD623-060 |
| 26 | CHAIN GUARD | 1 | WD60-CGC |
| 27 | M10 HEX HD SET x 70mm LONG | 2 | Z26-068B |
| 28 | 10mm DIA FLAT WASHER | 2 | Z10-02-10 |
| 29 | M10 HEX HD SET x 30mm LONG | 2 | Z26-062S |
| 30. | CHAIN TENSIONER | 1 | WD60-CT |

TANCO AUTOWRAP 400 A / 500 A MODEL 1994



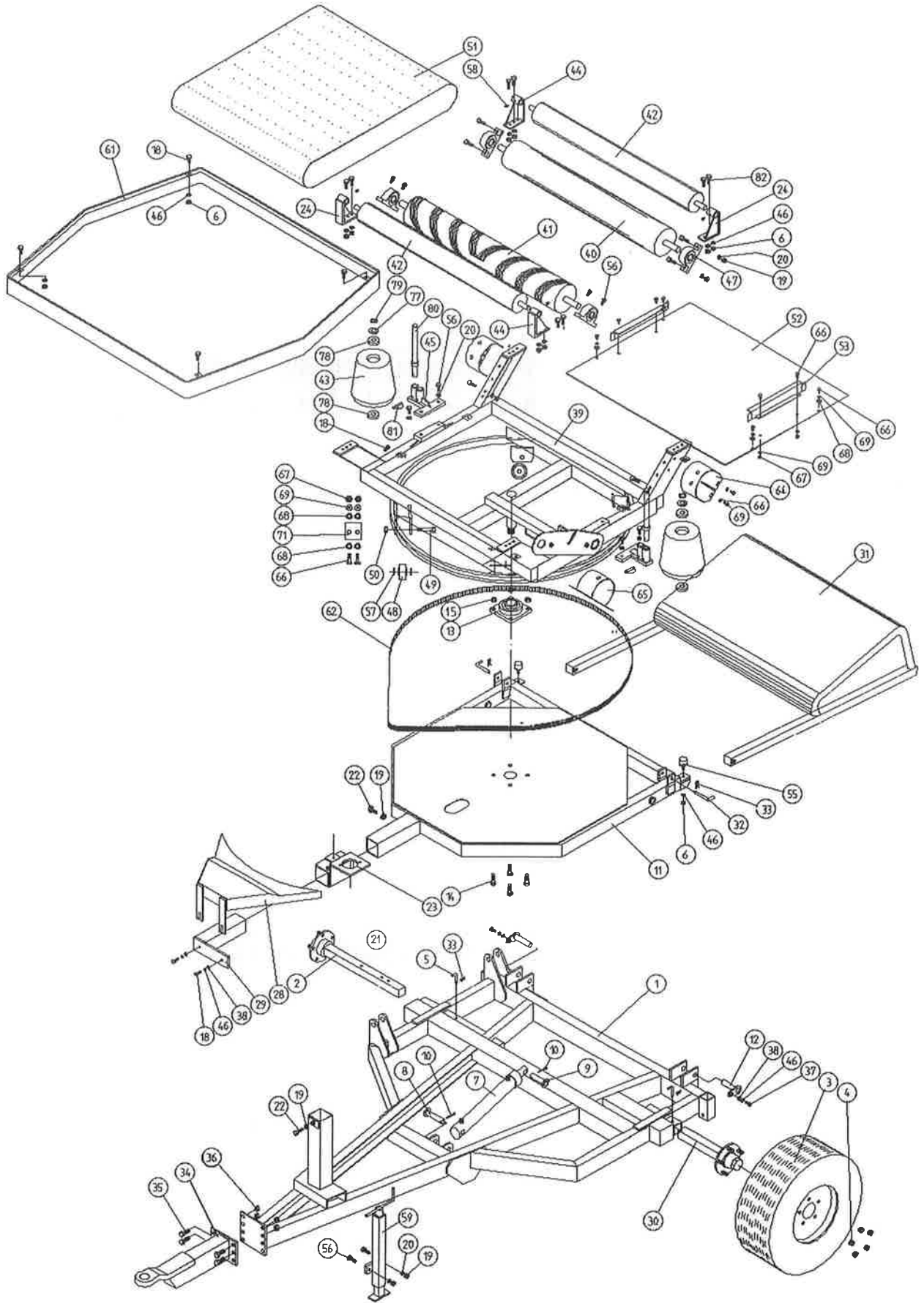
FILE NAME WD 60 PL 26

WD60-PL7

TANCO AUTOWRAP 400A/500A MODEL (TRAILED) 1994
PARTS LIST

| ITEM NO | DESCRIPTION | QTY | PART-NO |
|---------|--|-----|------------------------|
| 1. | CHASIS ASSY | 1 | WD60-CHA |
| 2. | STUB AXLE (LONG) | 1 | Z04-033 |
| 3. | WHEELS | 2 | Z04-03 |
| 4. | WHEELS NUTS | 10 | M22AWNA |
| 5. | BISSEL PIN | 2 | Z03-22-AW82 |
| 6. | M10 HEX NUT | 18 | Z18-10 |
| 7. | HYD. RAM | 1 | Z01-01-AR687 |
| 8. | RAM BOTTOM PIVOT PIN | 1 | Z03-02-330 |
| 9. | RAM TOP PIVOT PIN | 1 | Z03-03-50 |
| 10. | 2" X 1/4" SPLIT PIN | 2 | Z03-21-29 |
| 11. | TIPPING FRAME ASSY | 1 | WD60-TFC |
| 12. | TIPPING FRAME PIVOT PIN C/W GREASE NIPPLE | 2 | Z03-01-905 Z39-60 |
| 13. | 2" DIA FLANGE BEARING C/W CAM LOCK COLLAR | 1 | Z06-49EC |
| 14. | 5/8" UNF HEX HD SET X 2" LOG | 4 | Z3IB-064 |
| 15. | 5/8" UNF LOCKNUTS | 4 | Z20-10 |
| 18. | M10 HEX HD SET X 30MM LONG | 10 | Z26-062S |
| 19. | M12 HEX NUT | 14 | Z16-12 |
| 20. | 12MM DIA SPRING WASHER | 12 | Z12-02-12 |
| 22. | M12 HEX HD SETS X 30MM LONG | 1 | Z26-082S |
| 23. | HYD MOTOR MOUNTING ASSY | 1 | WD60-HMB |
| 24. | ROLLER MOUNTING BRACKET | 1 | WD60-TRMBL |
| 28. | HYD. MOTOR GUARD ASSY | 1 | WD60-HMG |
| 29. | HYDRAULIC MOTOR GUARD MOUNTING BRACKET | 1 | WD60-HAMB |
| 30. | STUB AXLE (SHORT) | 1 | Z04-032 |
| 31. | BALE RAMP ASSY | 1 | WD60-BR |
| 32. | BISSEL PIN | 2 | Z03-22-AW100 |
| 33. | 4MM "R" CLIP | 4 | Z36-02 |
| 34. | RING HITCH ASSY (LONG) | 1 | WD65-HIT |
| 35. | M16 HEX HD SET X 45MM LONG | 4 | Z26-123S |
| 36. | M16 LOCKNUTS | 4 | Z23-16 |
| 37. | M10 HEX HD SET X 25MM LONG | 2 | Z26-061S |
| 38. | 10MM DIA MACHINED FLAT WASHER | 4 | Z11-02-10 |
| 39. | TURN TABLE ASSY | 1 | WD60-TAC |
| 40. | BIG ROLLER ASSY IDLER | 1 | WD65-BRI |
| 41. | BIG ROLLER ASSY DRIVER | 1 | WD65-BRD |
| 42. | SMALL ROLLER ASSY | 2 | WD60-SMR |
| 43. | SIDE ROLLER | 2 | Z06-AWR |
| 44. | ROLLER MTG. BRACKET | 2 | WD60-TRMBR |
| 45. | END ROLLER MOUNTING BRACKET | 2 | WD60-ERM |
| 46. | 10MM SPRING WASHERS | 18 | Z12-02-10 |
| 47. | 1 1/4" PILLOW BLOCK BEARING C/W CAM LOCK COLLAR | 4 | Z06-485 |
| 48. | SUPPORT WHEELS (4" DIA) | 4 | Z06-466 |
| 49. | AXLE ASSY C/W GREASE NIPPLE | 4 | Z03-22-AW/AX Z39-60 |
| 50. | M20 LOCKNUTS | 4 | Z23-20 |
| 51. | 1 METER WIDE X 89 1/2" LONG X 1/4" FLAT BELT | 1 | Z05-02-AWV |

TANCO AUTOWRAP 400 A / 500 A MODEL 1994



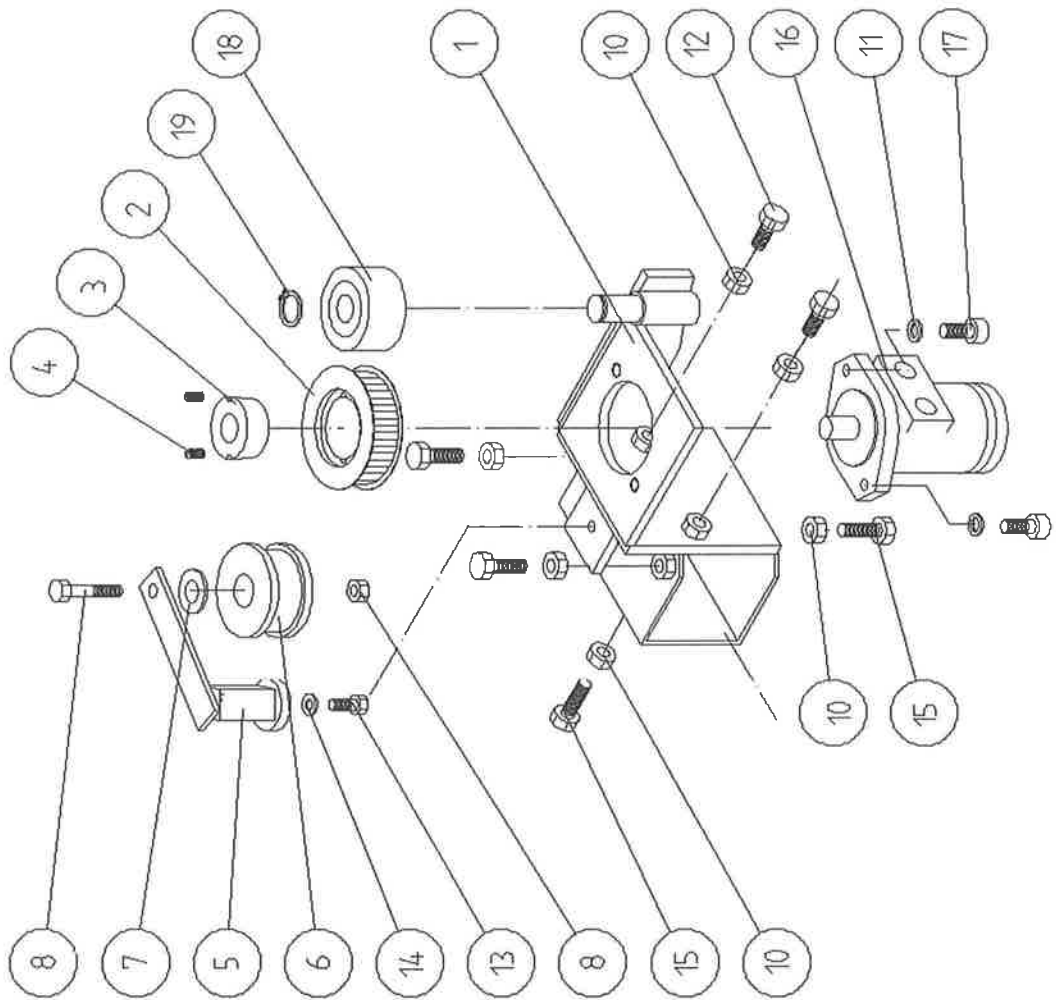
FILE NAME WD 60 PL 26

WD60-PL7

TANCO AUTOWRAP 400A/500A MODEL (TRAILED) 1994
PARTS LIST

| ITEM NO | DESCRIPTION | QTY | PART-NO |
|---------|---|-----|-------------|
| 52. | TURN TABLE COVER PLATE | 1 | WD60-093 |
| 53. | BELT GUIDE ASSY | 2 | WD625-BG |
| 55. | BUFFER 50MM DIA X 40MM LONG | 2 | Z40-20 |
| 56. | M12 HEX HD SET X 40MM LONG | 14 | Z26-084S |
| 57. | SPACER | 8 | WD60-198 |
| 58. | 1/8" BSP ST GREASE NIPPLE | 4 | Z39-60 |
| 59. | SCREW JACK ASSEMBLY | 1 | WD60-JA |
| 61. | MAIN GUARD ASSY | 1 | WD60-MG |
| 62. | 170" LONG X 1/2 PITCH X 1" WIDE TOOTHED BELT | 1 | Z05-02-AW20 |
| 64. | GRASS GUARD (CLOSED TYPE) | 3 | Z49-98 |
| 65. | GRASS GUARD (OPEN TYPE) | 1 | Z49-981 |
| 66. | M8 HEX HD SETS X 20MM LONG | 20 | Z26-039S |
| 67. | M8 HEX NUTS | 14 | Z18-08 |
| 68. | 8MM DIA FLAT WASHERS (MUD FLAP) | 20 | Z11-02-081 |
| 69. | 8MM DIA SPRING WASHERS | 20 | Z12-02-08 |
| 71. | SCRAPER | 2 | WD60-705 |
| 77. | THRUST WASHER | 2 | WD60-292 |
| 78. | BEARING (25MM I.D.) | 4 | Z06-AWRB-93 |
| 79. | CIRCLIP | 2 | Z28-525 |
| 80. | ROLLER SHAFT ASSEMBLY | 2 | WD60-RSA |
| 81. | 10MM "D" LINCH PINS | 2 | Z38-03 |
| 82. | M10 HEX HD SET X 35MM LONG | 8 | Z26-063S |

TANCO AUTOWRAP 1994 MODEL
HYDRAULIC MOTOR DRIVE ASSEMBLY



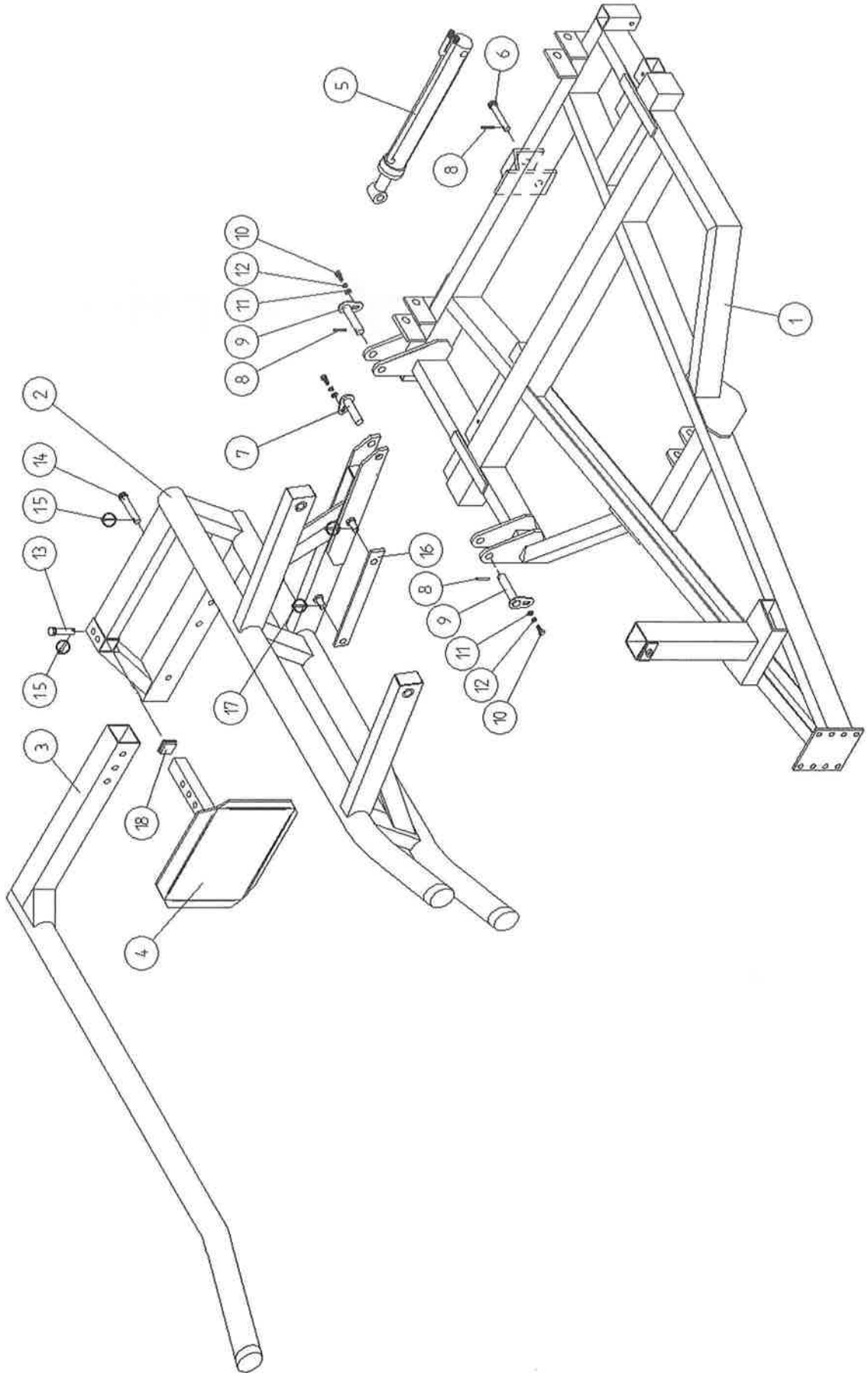
WD60-PL27

TANCO AUTOWRAP 1994 MODEL
HYDRAULIC MOTOR DRIVE ASSEMBLY

PARTS LIST

| ITEM NO. | DESCRIPTION | QTY. | PART-NO. |
|----------|--------------------------------------|------|-------------|
| 1. | HYDRAULIC MOTOR MOUNTING ASSY. | 1 | WD65-HMB |
| 2. | 4" DIA X 1/2" PITCH TOOTHED PULLY | 1 | Z09-005-AW1 |
| 3. | TAPER LOCK BUSH TO SUIT 1" DIA SHAFT | 1 | Z09-005-AW2 |
| 4. | M10 STUDS X 15MM | 2 | Z28-01 |
| 5. | ROSTA TENSIONING UNIT ARM | 1 | Z06-454 |
| 6. | STEPPED ROLLER C/W BEARINGS | 1 | Z06-456 |
| 7. | SPACER | 1 | WD60-798 |
| 8. | M10 HEX HD BOLT X 60MM LONG | 1 | Z26-067B |
| 9. | M10 LOCKNUT | 1 | Z23-10 |
| 10. | M12 HEX NUT | 6 | Z18-12 |
| 11. | 12MM DIA SPRING WASHER | 2 | Z12-02-12 |
| 12. | M12 HEX HD SET X 30MM LONG | 2 | Z26-082S |
| 13. | M10 HEX HD SET X 25MM LONG (TUFLOCK) | 1 | Z26-061S |
| 14. | 10MM DIA SPRING WASHER | 1 | Z12-02-10 |
| 15. | M12 HEX HD SET X 40MM LONG | 6 | Z26-084S |
| 16. | HYDRAULIC MOTOR C.L. | 1 | Z01-02-AR75 |
| 17. | M12 SOCKET HD SCREW X 30MM LONG | 2 | Z13-6-12X30 |
| 18. | ROLLER C/W BEARINGS | 1 | Z06-457 |
| 19. | CIRCLIP | 1 | Z28-525 |

TANCO AUTOWRAP 400/500 MODELS
LIFT ARM ASSEMBLY



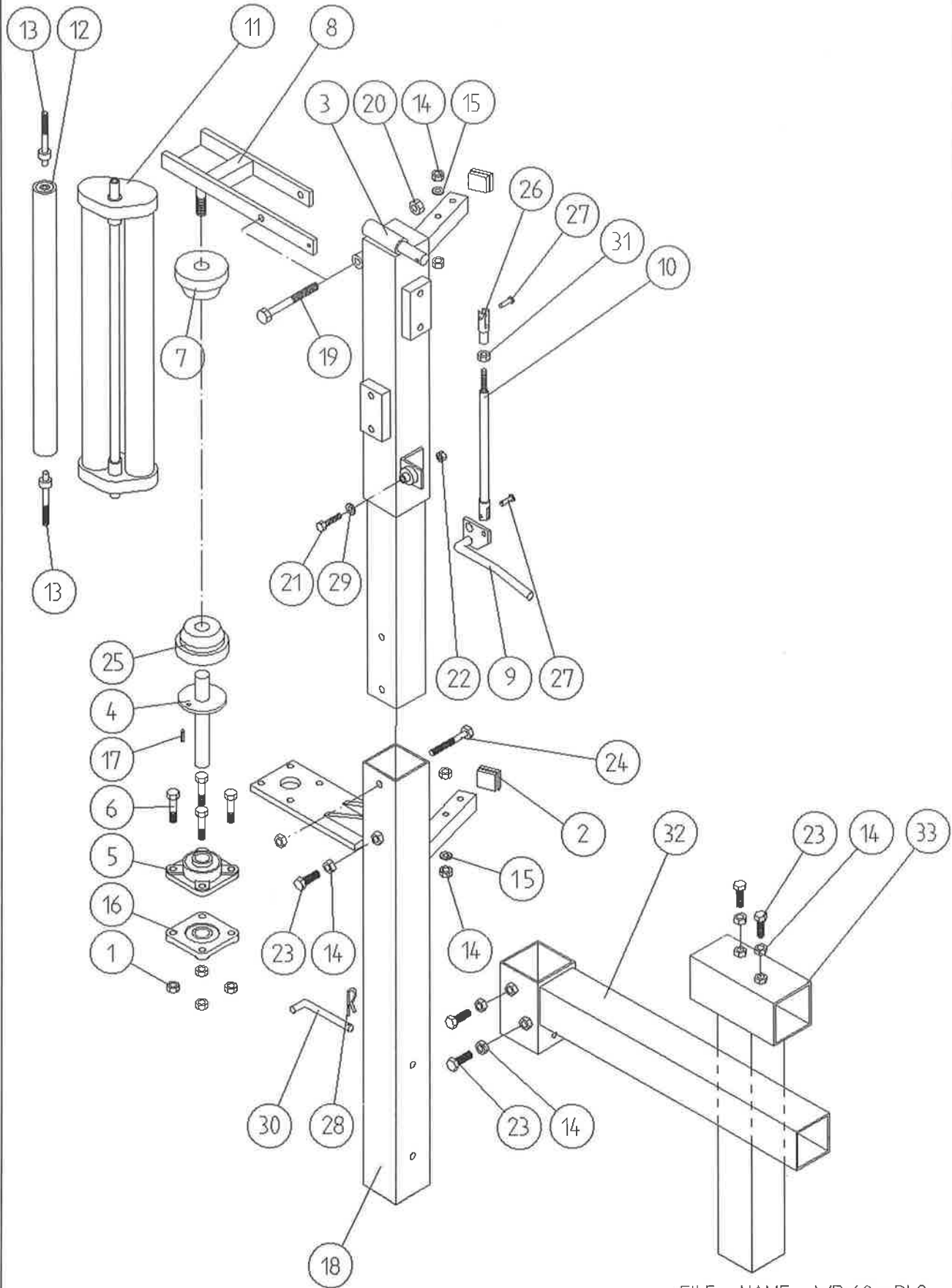
WD60-LA

TANCO AUTOWRAP 400S / 500S MODEL (TRAILED) 1994
PARTS LIST

LIFT ARM AND CHASSIS

| ITEM NO. | DESCRIPTION | QTY. | PART-NO. |
|----------|--------------------------------------|------|------------|
| 1. | CHASSIS ASSEMBLY | 1 | WD60-CHA |
| 2. | LIFT ARM ASSEMBLY | 1 | WD60-LA |
| 3. | ADJUSTABLE OUTER ARM ASSY | 1 | WD60-LAAA |
| 4. | ADJUSTABLE BALE STOP | 1 | WD610-LAS |
| 5. | HYDRAULIC RAM (LIFT ARM) | 1 | Z01-01-AW |
| 6. | RAM BOTTOM PIVOT PIN | 1 | Z03-02-330 |
| 7. | RAM TOP PIVOT PIN | 1 | Z03-01-797 |
| 8. | 2" x 1/4" SPLIT PINS | 3 | Z03-21-29 |
| 9. | LIFT ARM PIVOT C/W GREASE NIPPLE | 2 | Z03-01-905 |
| 10. | M10 HEX HD SET x 25mm LONG (TUFLOCK) | 3 | Z26-061S |
| 11. | 10mm DIA MACHINED FLAT WASHER | 3 | Z11-02-10 |
| 12. | 10mm DIA SPRING WASHER | 3 | Z12-02-10 |
| 13. | SPAREX PIN | 1 | Z03-04-73 |
| 14. | SPAREX PIN | 1 | Z03-04-77 |
| 15. | 7/16" DIA LINCH PINS | 2 | Z03-22-06 |
| 16. | SAFETY SUPPORT BAR | 1 | WD60-319 |
| 17. | 6mm DIA LINCH PIN | 2 | Z03-22-03 |
| 18. | PLASTIC CAP | 1 | Z32-10 |

TANCO AUTOWRAP 400A MODEL 1994 FILM DISPENSER SYSTEM

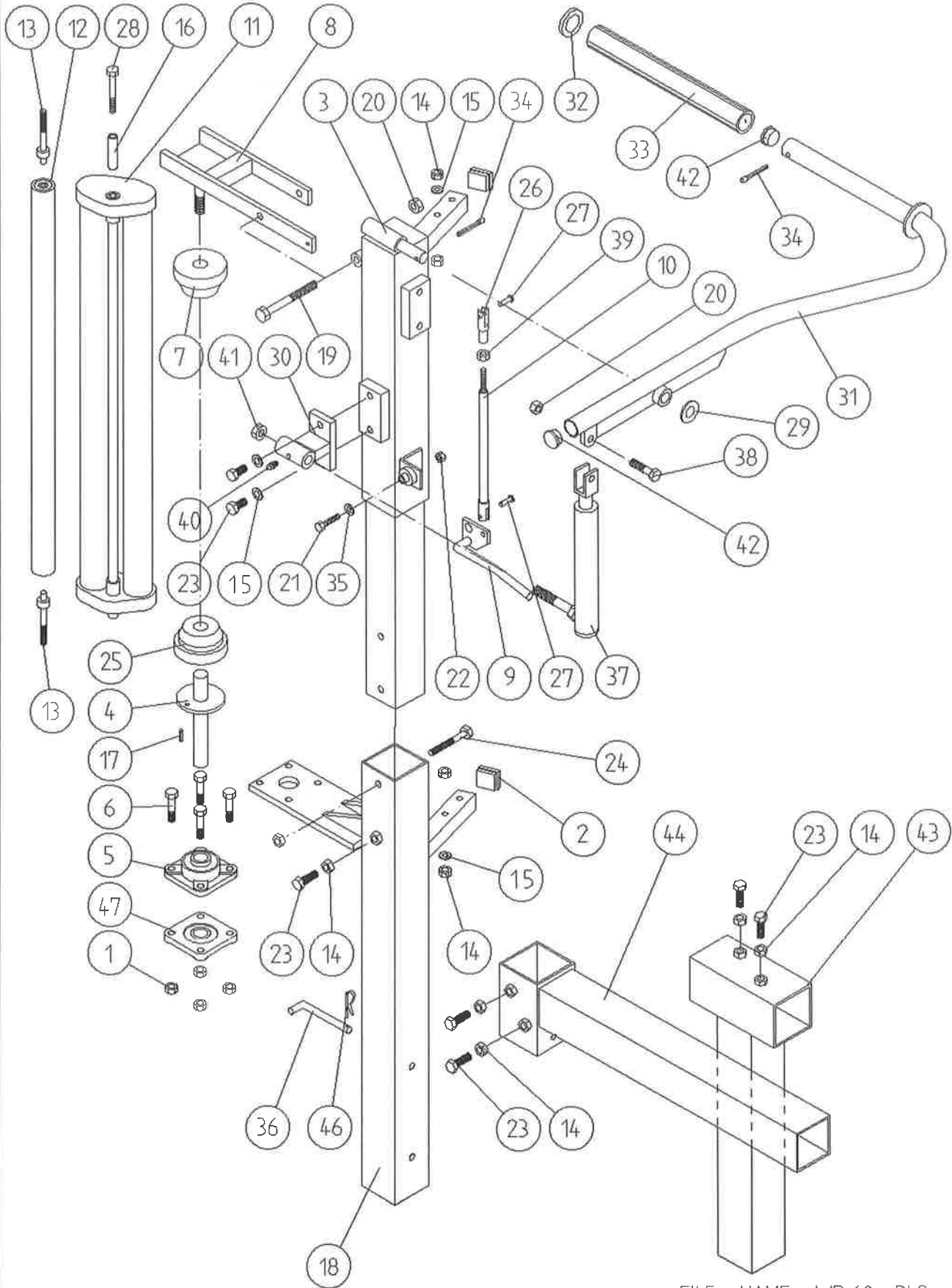


FILE NAME WD 60 - PL8

WD60-PL8**TANCO AUTOWRAP 400A MODEL (TRAILED) 1994**
FILM DISPENSING SYSTEM**PARTS LIST**

| ITEM NO. | DESCRIPTION | QTY. | PART-NO. |
|----------|--|------|------------|
| 1. | M10 LOCKNUTS | 4 | Z23-10 |
| 2. | PLASTIC CAPS (TO SUIT 40 x 40 x 3 RHS) | 4 | Z32-07 |
| 3. | DISPENSER MOUNTING (UPPER) | 1 | WD60-DMUH |
| 4. | FILM SPOOL ASSEMBLY | 1 | WD60-SPO |
| 5. | 1" DIA FLANGE BEARING C/W CAM LOCK | 1 | Z06-48EC |
| 6. | M10 HEX HD BOLT x 50mm LONG | 4 | Z26-066B |
| 7. | CONE (TOP) C/W BALL BEARINGS | 1 | Z06-45-01 |
| 8. | CLAMP ASSEMBLY | 1 | WD60-DMCA |
| 9. | LEVER ASSEMBLY | 1 | WD60-DMLA |
| 10. | LINK ASSEMBLY | 1 | WD60-DMLK |
| 11. | FILM DISPENSER UNIT MK 6 (70% STRETCH) | 1 | D613 |
| 12. | SLAVE ROLLER ASSY (PLASTIC COATED) | 1 | WD60-SLR |
| 13. | SLAVE ROLLER PIVOT | 2 | WD60-253 |
| 14. | M12 HEX NUTS | 9 | Z18-12 |
| 15. | 12mm DIA SPRING WASHER | 2 | Z12-02-12 |
| 16. | 1" DIA FLANGE BEARING | 1 | Z06-48 |
| 17. | 1/4" DIA TENSION PIN xxx/4" LONG | 1 | Z03-20-062 |
| 18. | DISPENSER MOUNTING (LOWER) | 1 | WD60-DMLH |
| 19. | M12 HEX HD BOLT x 130mm LONG | 1 | Z26-094B |
| 20. | M12 LOCKNUT | 3 | Z23-12 |
| 21. | M8 LOCKNUT HD BOLT x 35mm LONG | 1 | Z26-042S |
| 22. | M8 LOCKNUT | 1 | Z23-08 |
| 23. | M12 HEX HD SET x 30mm LONG | 5 | Z26-082S |
| 24. | M12 HEX HD BOLT x 100MM LONG | 1 | Z26-092B |
| 25. | CONE (BOTTOM) | 1 | Z06-45-02 |
| 26. | CLEVIS (M10) | 1 | Z49-336 |
| 27. | PIN (5/16" DIA) C/W CLIP | 2 | Z49-337 |
| 28. | 4mm "R" CLIP | 1 | Z36-02 |
| 29. | 8mm DIA MUD FLAP WASHER | 1 | Z11-02-081 |
| 30. | BISSEL PIN x 110mm LONG | 1 | WD60-874 |
| 31. | 5/16" UNF HEX NUT | 1 | Z15-05 |
| 32. | DISPENSER MAST VERTICAL SOCKET ASSY. | 1 | WD65-DVS |
| 33. | DISPENSER MAST HORIZONTAL SOCKET ASSY | 1 | WD65-DHS |

TANCO AUTOWRAP 500A MODEL 1994
FILM DISPENSER SYSTEM

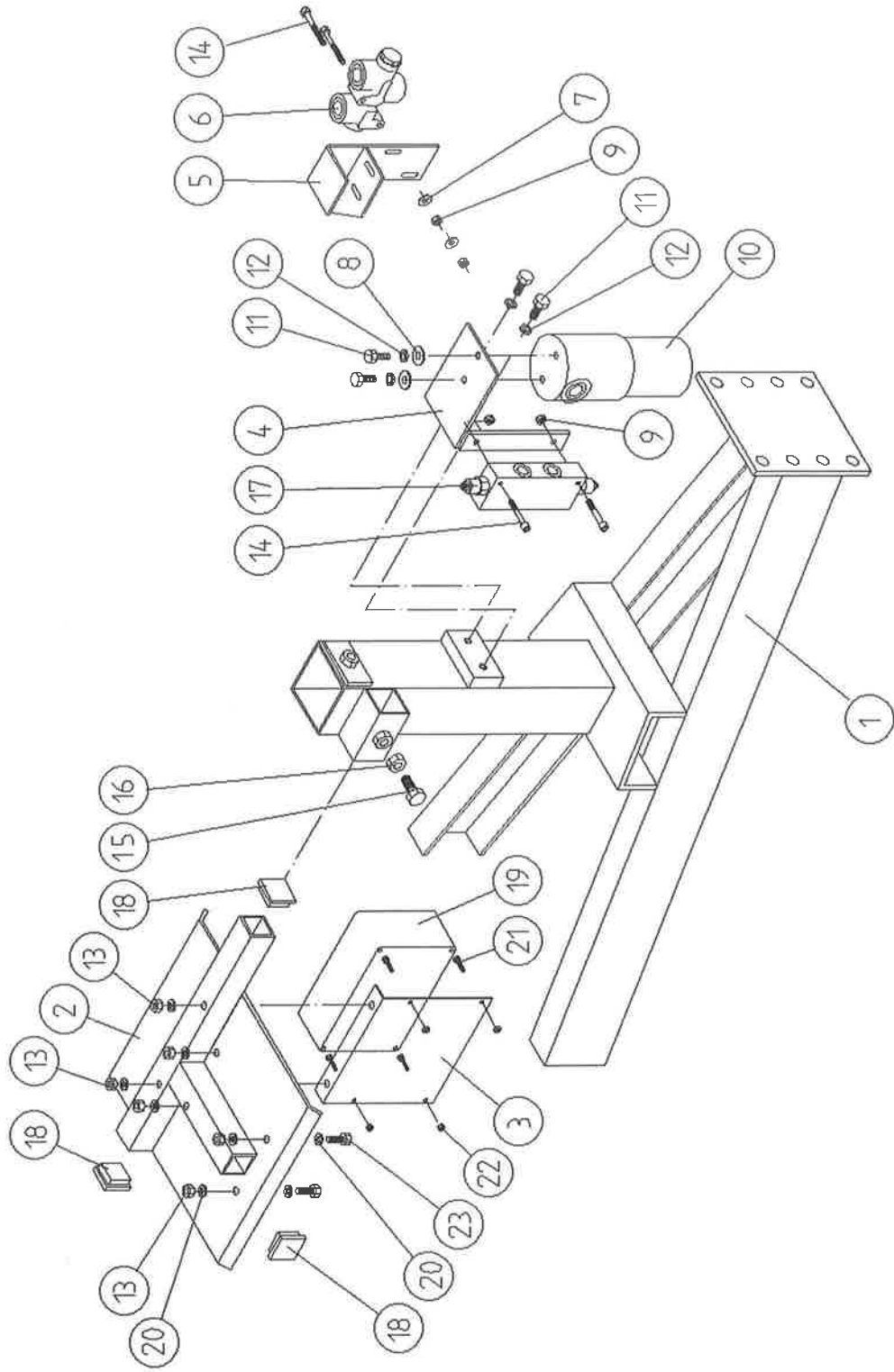


FILE NAME WD 60 - PL9

WD60-PL9**TANCO AUTOWRAP 500A MODEL (TRAILED) 1994**
FILM DISPENSING SYSTEM**PARTS LIST**

| ITEM NO. | DESCRIPTION | QTY | PART-NO. |
|----------|--|-----|-------------|
| 1. | M10 LOCKNUTS | 4 | Z23-10 |
| 2. | PLASTIC CAPS (TO SUIT 40 x 40 x 3 RHS) | 2 | Z32-07 |
| 3. | DISPENSER MOUNTING (UPPER) | 1 | WD60-DMUH |
| 4. | FILM SPOOL ASSEMBLY | 1 | WD60-SPO |
| 5. | 1" DIA FLANGE BEARING C/W CAM LOCK | 1 | Z06-48EC |
| 6. | M10 HEX HD BOLT x 50mm LONG | 4 | Z26-066B |
| 7. | CONE (TOP) C/W BALL BEARINGS | 1 | Z06-45-01 |
| 8. | CLAMP ASSEMBLY | 1 | WD60-DMCA |
| 9. | LEVER ASSEMBLY | 1 | WD60-DMLA |
| 10. | LINK ASSEMBLY | 1 | WD60-DMLK |
| 11. | FILM DISPENSER UNIT MK 8 (70% STRETCH) | 1 | D615 |
| 12. | SLAVE ROLLER ASSY (PLASTIC COATED) | 1 | WD65-SLR |
| 13. | SLAVE ROLLER PIVOT | 2 | WD60-253 |
| 14. | M12 HEX NUTS | 9 | Z18-12 |
| 15. | 12mm DIA SPRING WASHER | 2 | Z12-02-12 |
| 16. | SLEEVE | 1 | D52012 |
| 17. | 1/4" DIA TENSION PIN x 3/4" LONG | 1 | Z03-20-062 |
| 18. | DISPENSER MOUNTING (LOWER) | 1 | WD60-DMLH |
| 19. | M12 HEX HD BOLT x 130mm LONG | 1 | Z26-094B |
| 20. | M12 LOCKNUT | 3 | Z23-12 |
| 21. | M8 HEX HD BOLT x 35mm LONG | 1 | Z26-042S |
| 22. | M8 LOCKNUT | 1 | Z23-08 |
| 23. | M12 HEX HD SET x 30mm LONG | 3 | Z26-082S |
| 24. | M12 HEX HD BOLT x 100mm LONG | 1 | Z26-092B |
| 25. | CONE (BOTTOM) | 1 | Z06-45-02 |
| 26. | CLEVIS (M10) | 1 | Z49-335 |
| 27. | PIN (5/16" DIA C/W CLIP) | 2 | Z49-337 |
| 28. | M10 HEX HD BOLT x 80mm LONG | 1 | Z26-0691B |
| 29. | 3/4" DIA FLAT WASHER | 1 | Z10-02-19 |
| 30. | FILM PULL DOWN BRACKET ASSY | 1 | WD65-FPDB |
| 31. | FILM PULL DOWN ARM ASSY | 1 | WD65-FPDA |
| 32. | RETAINING WASHER | 1 | WD60-859 |
| 33. | ROLLER | 1 | WD60-866 |
| 34. | 2" x 1/4" SPLIT PIN | 1 | Z01-23-29 |
| 35. | 4mm "R" CLIP | 1 | Z36-02 |
| 36. | BISSEL PIN (110mm LONG) | 1 | WD60-874 |
| 37. | HYDRAULIC RAM | 1 | Z01-01-AW25 |
| 38. | M12 HEX HD SET x 50mm LONG | 1 | Z26-086S |
| 39. | 5/16" UNF HEX NUT | 1 | Z15-05 |
| 40. | 1/8" BSP ST. GREASE NIPPLE | 1 | Z39-60 |
| 41. | M16 LOCKNUT | 1 | Z23-16 |
| 42. | 1" GB PLASTIC CAP | 2 | Z32-14 |
| 43. | DISPENSER MAST HORIZONTAL SOCKET ASSY | 1 | WD65-DHS |
| 44. | DISPENSER MAST VERTICAL SOCKET ASSY | 1 | WD65-DVS |
| 45. | DISPENSER MAST HORIZONTAL SOCKET ASSY | 1 | WD65-DHS |
| 46. | 4mm "R" CLIPS | 1 | Z36-02 |
| 47. | 1" DIA FLANGE BEARING | 1 | Z06-48 |

TANCO AUTOWRAP 400A/500A MODELS (1994)
 VALVE/JUNCTION BOX / FILTER & DIVERTER VALVE MOUNTING BRACKETS ASSY



WD63-PL21

TANCO AUTOWRAP 400A/500A MODEL (1994)

VALVE/JUNCTION BOX/FILTER & DIVERter VALVE MOUNTING
BRACKET ASSEMBLY
PARTS LIST

| ITEM NO | DESCRIPTION | QTY | PART-NO. |
|---------|--|-----|--------------|
| 1. | CHASSIS ASSY | 1 | |
| 2. | 3 BANK VALVE MOUNTING BRACKET ASSY | 1 | WD610-VMP |
| 3. | JUNCTION BOX MOUNTING PLATE | 1 | WD612-04 |
| 4. | OIL FILTER/OVER-CENTRE-VALVE MOUNTING BRACKET | 1 | WD610-FVB |
| 5. | FLOW DIVIDER MOUNTING BRACKET | 1 | WD65-FDM |
| 6. | FLOW DIVIDER | 1 | Z01-03-10-A6 |
| 7. | 6MM DIA MUD FLAP WASHER | 2 | Z11-02-061 |
| 8. | 8MM DIA MUD FLAP WASEHR | 2 | Z11-02-081 |
| 9. | M6 LOCKNUT (NYLOCK) | 4 | Z23-06 |
| 10. | OIL FILTER | 1 | Z01-24-08 |
| 11. | M8 HEX HD SET x 25mm | 4 | Z26-040S |
| 12. | 8mm DIA SPRING WASHER | 4 | Z12-02-08 |
| 13. | M8 LOCKNUTS | 6 | Z23-08 |
| 14. | M6 ALLEN HD SOCKET SCREW x 45mm | 4 | Z13-020-50 |
| 15. | M12 HEX HD SET x 30mm | 1 | Z26-082S |
| 16. | M12 HEX NUT | 1 | Z18-12 |
| 17. | OVER-CENTRE VALVE | 1 | Z01-03-10-A8 |
| 18. | PLASTIC CAP TO SUIT 40 x 40 RHS | 3 | Z40-07 |
| 19. | JUNCTION BOX | 1 | ZDG-JB2 |
| 20. | 8mm DIA FLAT WASHER | 12 | Z10-02-08 |
| 21. | M4 ALLEN HD SOCKET SCREW x 16mm | 4 | Z26-006 |
| 22. | M4 LOCKNUT | 4 | Z23-04 |
| 23. | M8 HEX HD SET x 20mm | 6 | Z26-039S |

FAULT FINDING

PROBLEMS.

1. Drive Belt Slipping on Drive. Tension belt with Automatic tension set to 25 - 30 degrees - see page 8. Check belt is correct pitch if it has been replaced.

2. Drive belt breaking and bottom or Top Rim coming off motor sprocket. Check that cross line relief valve is working on motor. Check motor mount for alignment. Reduce tension on Drive Belt. Check there is no vertical movement of turntable spindle - if so tighten bearing locking screws on spindle and ensure that collar is secure on spindle below bearing.

3. Film Breaking Wash off dispenser and slave rollers Change roll of film. Use recommended films only.

4. Film not wrapping evenly on bale. Adjust film mast so centre of film roll is aligned with centre of bale .

5. Film Tearing on Ramp. Check for sharp edges and remove.

6. Bale Skidding on Ramp. Fit Hessian Bag or piece of carpet to Ramp.

7. Film Dispenser not Pre-Stretching Film. Check that both Rollers turn when one is turned by hand. If not, fit new gears or replace unit.

8. Tyres coming off 4" platform Support Wheels. Replace Wheels - Reduce speed below 25 r.p.m. - Do not oil or grease path of wheels on platform.

FAULT FINDING

PROBLEMS

9. MAIN BELT MOVING SIDEWAYS

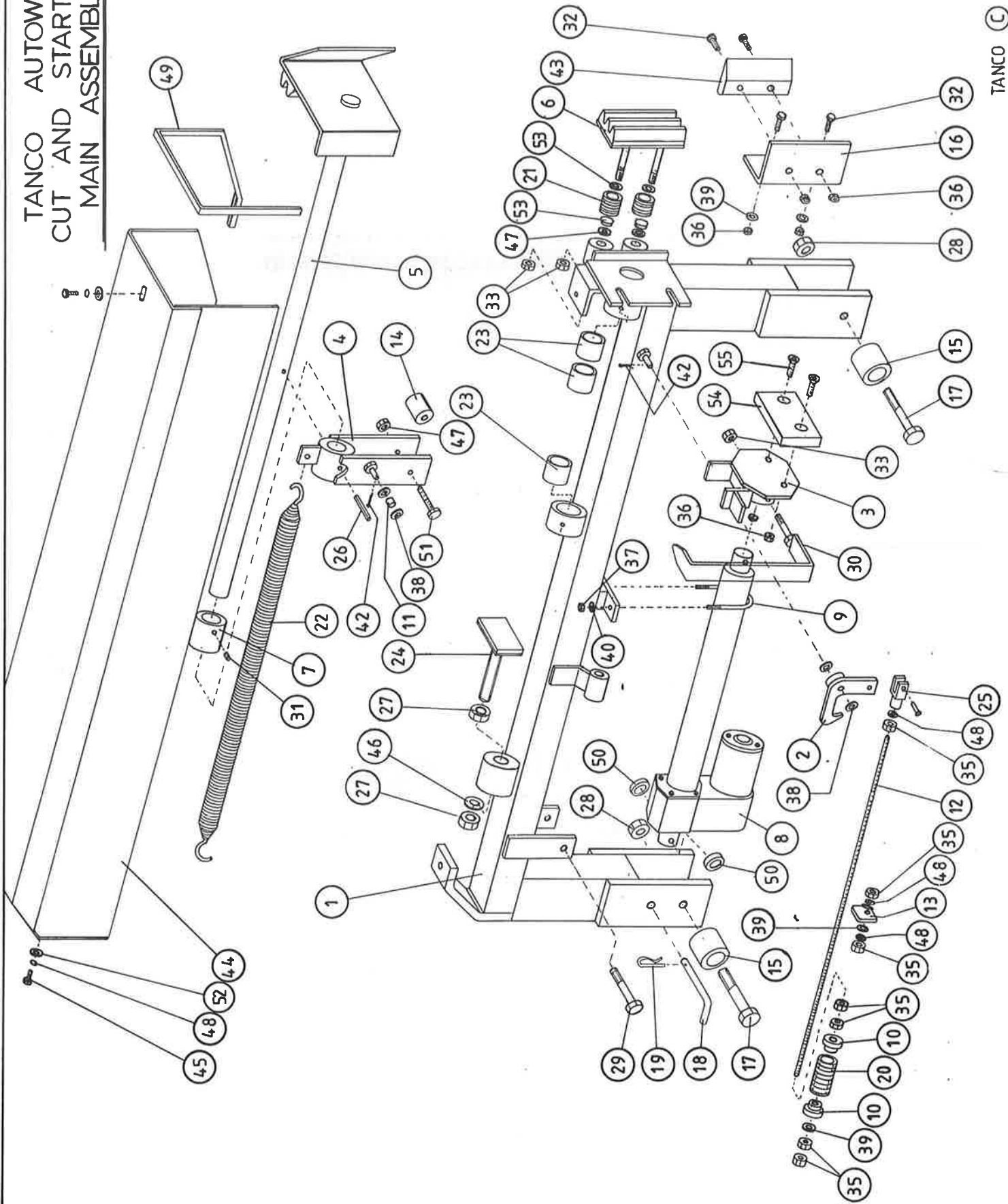
- (i) Ensure vertical rollers (plastic) are tight on the bale. Remember that the bale will reduce in size during wrapping and, on the round bales in particular, the corners will become rounded so that the bale will tend to move sideways due to centrifugal forces. Now, if the plastic rollers are too far apart, the bale will move against one of the plastic rollers whilst the belt will move in the opposite direction - so adjust the vertical plastic rollers so that they keep the bale central on the belt.
- (ii) Adjust bale stop on lift arm so that bale is loaded centrally onto platform.
- (iii) Check that both 6' rollers underneath the bale belt are running parallel to each other. Remember the golden rule - a belt will always move up a slope, so if the rollers are not parallel to each other then the belt will move to the widest setting.

NOTE:

It is important to adjust the idler roller only, as movement of the drive roller will entail adjusting the chain tension also. It is important to note if the belt moves to the same side all of the time, or if it moves first to the gearbox side and then to the other side. With the round bale wrapper, the belt will tend to move to the same side each time because the bale is always loaded the same way.

- (iv) Check that belt is the same measurement each side by running a string around the belt and measuring it. If one side is longer than the other replace the belt but if both sides are same measurement and all above adjustments fail, the try removing the belt and fitting it round the opposite way.

TANCO AUTOWRAP
 CUT AND START UNIT (1994)
 MAIN ASSEMBLY

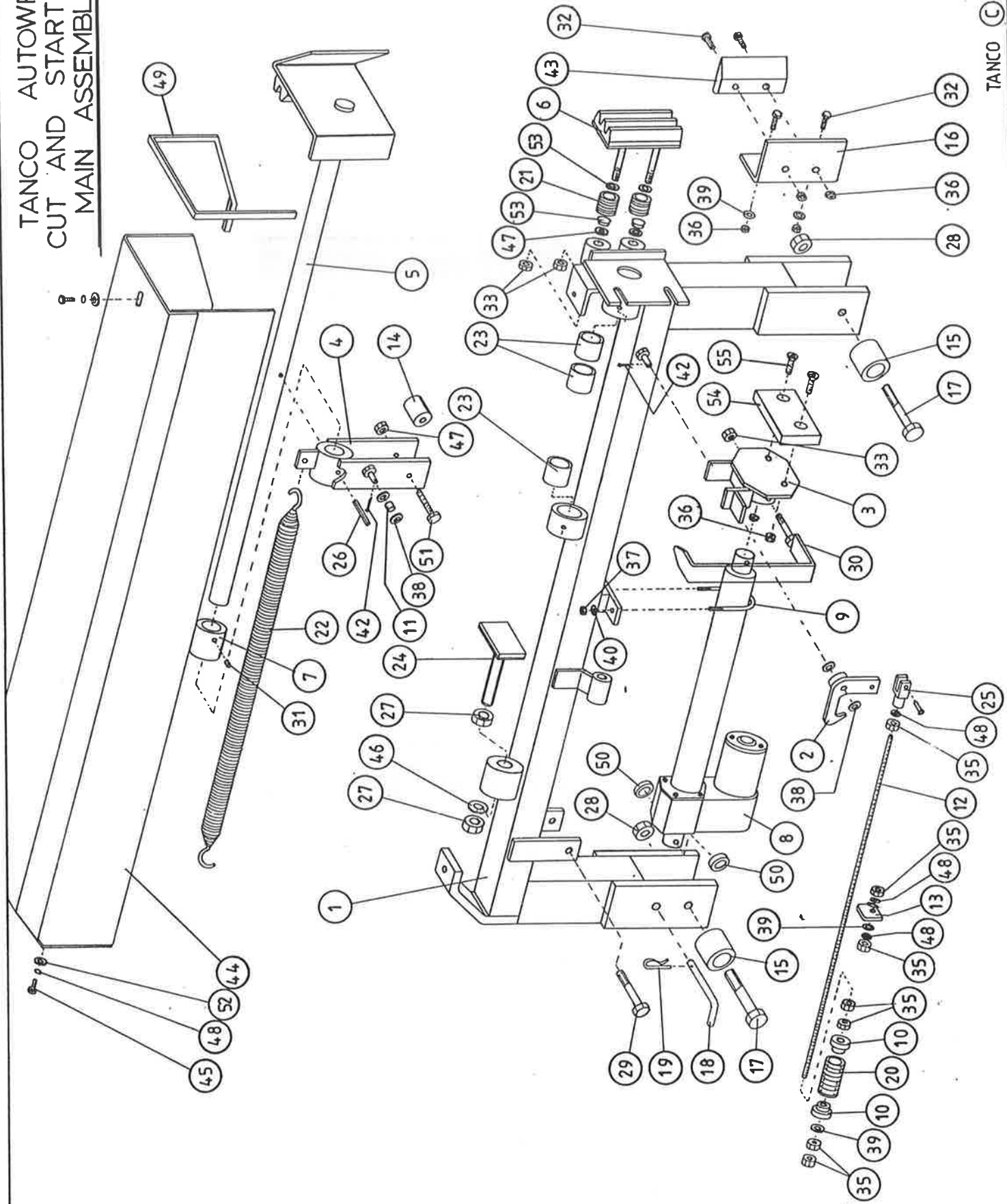


AUTOWRAP

**TANCO AUTOWRAP
CUT AND START UNIT (1994)
PARTS LIST**

| ITEM NO | DESCRIPTION | QTY | PART-NO. |
|---------|---|-----|--------------|
| 1. | MAIN MOUNTING FRAME ASSY | 1 | WD605-MF |
| 2. | LATCH ASSY. | 1 | WD605-LA |
| 3. | PUSH PLATE ASSY. | 1 | WD605-PP |
| 4. | GUIDE ASSY | 1 | WD605-GD |
| 5. | PLUNGER ASSY | 1 | WD605-PL |
| 6. | FILM GRIPPER ASSY | 1 | WD605-FG |
| 7. | PLUNGER END CAP | 1 | WD605-90 |
| 8. | WARNER LINEAR ACTUATOR D11 10B5 08 | 1 | ZD605-510 |
| 9. | "U" BOLT | 1 | WD605-45 |
| 10. | STEPPED COLLAR | 2 | WD605-46 |
| 11. | SLEEVE 1/2" DIA O.D. X 13/32" DIA I.D. | 1 | WD605-47 |
| 12. | THREADED ROUND 5/16" UNF | 1 | WD605-48 |
| 13. | TRIGGER | 1 | WD605-50 |
| 14. | COLLAR 1" DIA BRIGHT RD. X 41.5MM LONG | 1 | WD605-51 |
| 15. | SPACER | 1 | WD605-100 |
| 16. | BLADE GUARD/MOUNTING BRACKET | 1 | WD605-105 |
| 17. | M12 HEX HD BOLT X 80MM LONG | 2 | Z26-0901B |
| 18. | BISSEL PIN | 1 | Z03-22-AW100 |
| 19. | 4MM "R" CLIP | 1 | Z36-02 |
| 20. | SPRING 16MM O.D. X 1.5MM WIRE X 48MM LONG | 1 | Z07-34 |
| 21. | SPRING 1.09" O.D. X 0.092" WIRE X 1.54" LONG | 2 | Z07-44 |
| 22. | SPRING 1.125 O.D. X 0.125" WIRE X 330MM | 1 | Z07-46 |
| 23. | OILITE OIL RETAINING BUSH 1 1/8" O.D. X 3/4" X 1" L. | 3 | Z06-105 |
| 24. | RUBBER BUFFER ASSY. | 1 | WD605-BA |
| 25. | CLEVIS C/W PIN | 1 | Z49-33 |
| 26. | 1 1/2" X 1/4" DIA TENSION PIN | 1 | Z03-20-07 |
| 27. | M16 HEX NUTS | 2 | Z18-16 |
| 28. | M12 LOCKNUTS | 2 | Z23-12 |
| 29. | M12 HEX HD BOLT X 65MM | 1 | Z26-0882B |
| 30. | INDICATOR ASSY | 1 | WD605-PR |
| 31. | M8 GRUB SCREW | 1 | Z28-008 |
| 32. | M8 HEX HD SET X 25MM | 4 | Z26-040S |
| 33. | M12 BINX LOCKNUT | 4 | Z23-12BX |
| 35. | 5/16" UNF HEX NUT | 7 | Z15-05 |
| 36. | M8 LOCKNUT | 9 | Z18-08 |
| 37. | M6 LOCKNUT (NYLOCK) | 2 | Z23-06 |
| 38. | 10MM DIA FLAT WASHER | 10 | Z11-02-10 |
| 39. | 8MM DIA FLAT WASHER | 5 | Z11-02-08 |
| 40. | 6MM DIA FLAT WASHER | 2 | Z11-02-06 |
| 42. | 3MM DIA SPLIT PIN | 2 | Z03-21-02 |
| 43. | BLADE | 1 | WD605-104 |
| 44. | MAIN GUARD | 1 | WD605-MG |
| 45. | M8 HEX HD SET X 20MM LONG | 2 | Z26-039S |
| 46. | 10MM DIA SPRING WASHER | 2 | Z12-02-10 |
| 47. | 12MM DIA FLAT WASHER | 2 | Z11-02-12 |
| 48. | 8M DIA SPRING WASHER | 9 | Z12-02-08 |
| 49. | EDGING STRIP | 1 | Z44-12 |
| 50. | SPACER 1" O.D. X 1/2" I.D. X 6MM LONG | 2 | WD605-65 |

TANCO AUTOWRAP
 CUT AND START UNIT (1994)
 MAIN ASSEMBLY

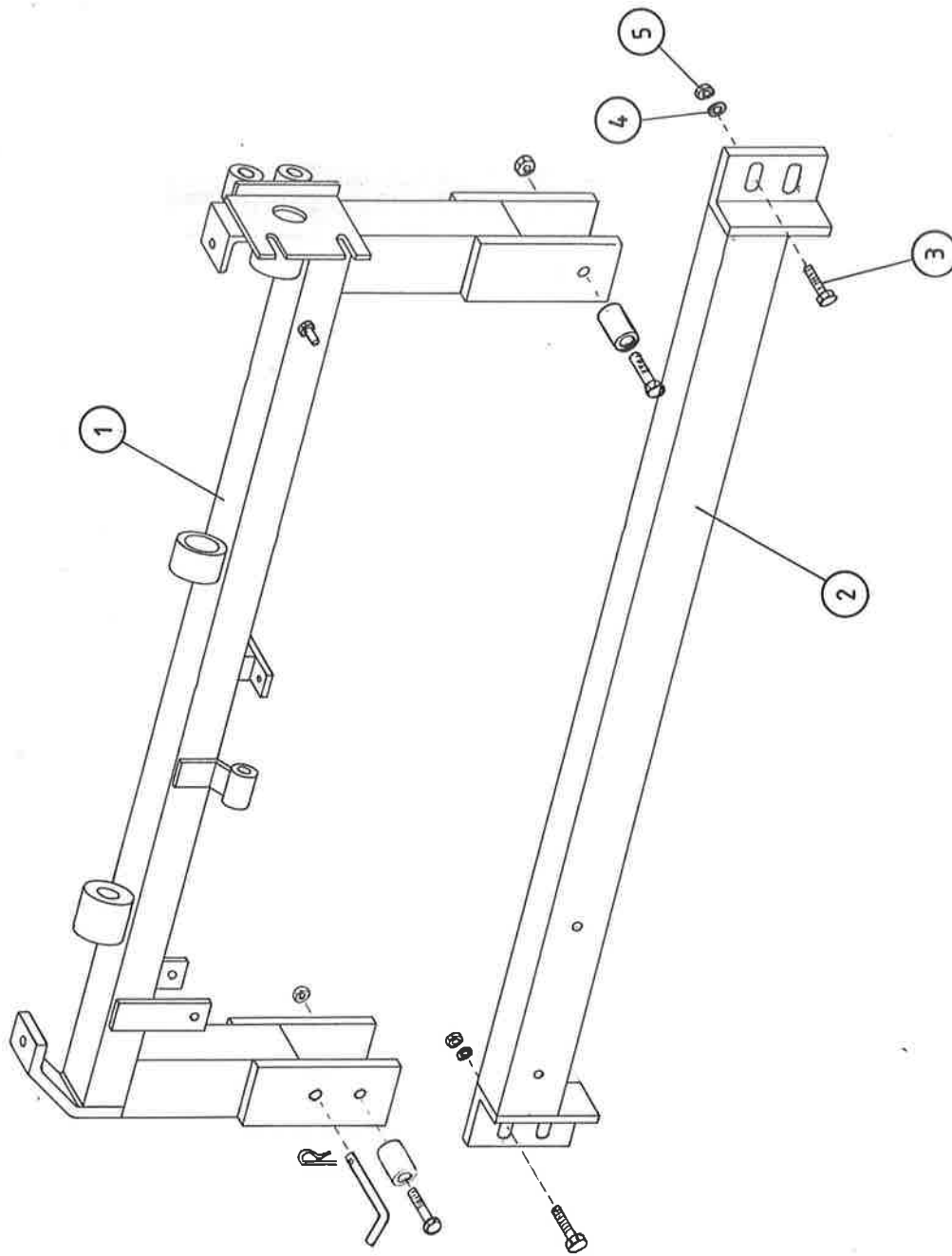


AUTOWRAP

**TANCO AUTOWRAP
CUT AND START UNIT (199)
PARTS LIST**

| ITEM NO | DESCRIPTION | QTY | PART-NO. |
|----------------|--|------------|-----------------|
| 51. | M10 HEX HDSET X 20MM | 2 | Z26-060S |
| 52. | 8MM DIA FLAT WASHER 1" O.D. | 4 | Z11-02-081 |
| 53. | 25MM O.D. X 12MM I.D. FILM GRIP WASHER | 4 | Z11-02-12FG |
| 54. | PACKER | 1 | WD605-133 |
| 55. | H8 X 40 COUNTER SUNK BOLT | 2 | Z13-5-08X40 |

TANCO AUTOWRAP CUT AND START (1994)
MOUNTING FRAME



WD605-MF

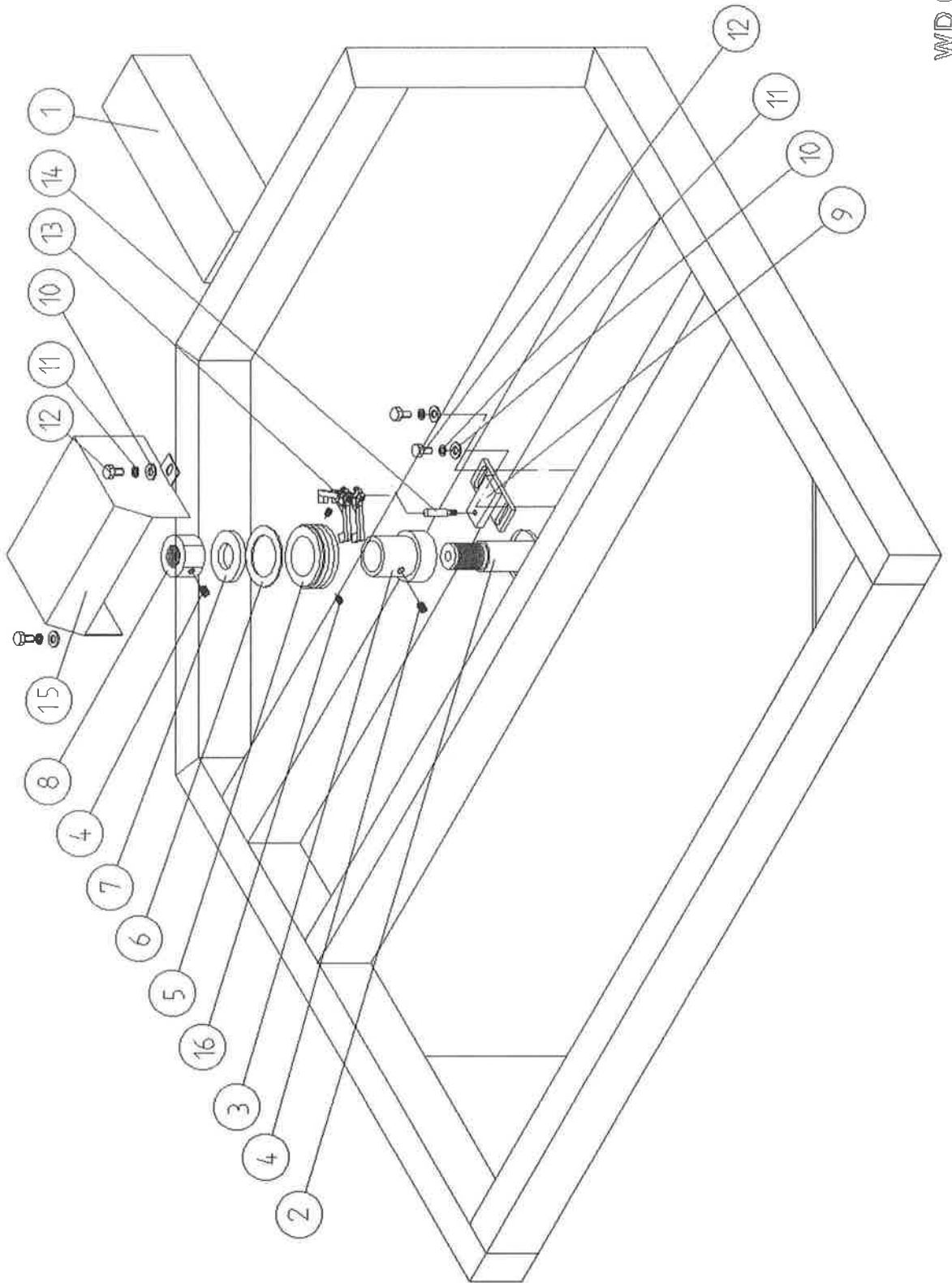
TANCO AUTOWRAP CUT AND START UNIT (1994)

MOUNTING FRAME

PARTS LIST

| ITEM NO | DESCRIPTION | QTY | PART-NO |
|---------|----------------------------|-----|-----------|
| 1. | MAIN MOUNTING FRAME ASSY | 1 | WD605-MF |
| 2. | MAIN FRAME MOUNTING | 1 | WD605-MFM |
| 3. | M10 HEX HD SET x 30mm LONG | 2 | Z26-062S |
| 4. | 10mm DIA. SPRING WASHER | 2 | Z12-02-10 |
| 5. | M10 HEX NUT | 2 | Z18-10 |

TANCO AUTOWRAP - CUT AND START UNIT (1994)
SLIP RING ASSEMBLY



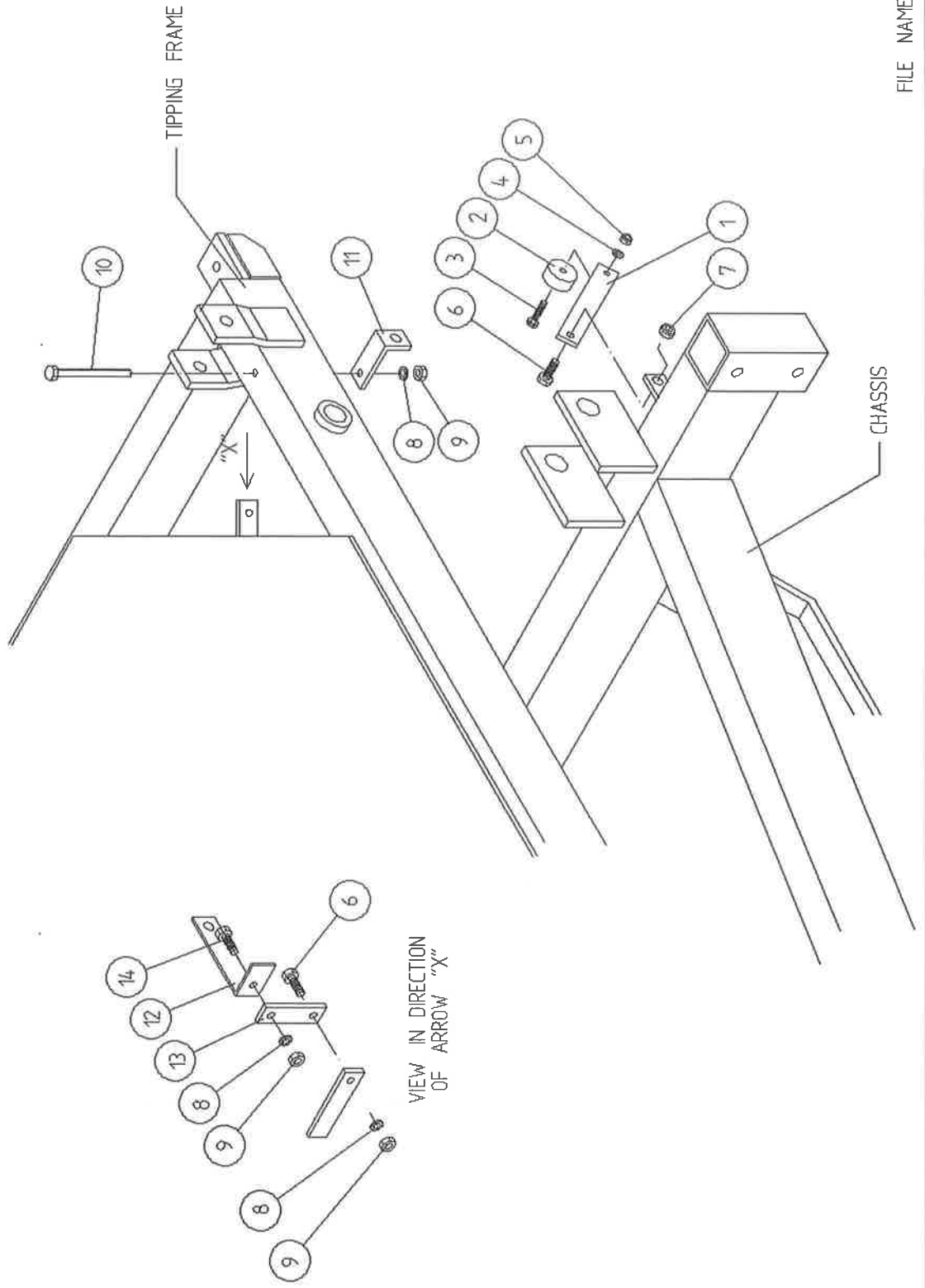
WD 605 - PL2

**TANCO AUTOWRAP CUT AND START UNIT (1994)
SLIP RING ASSY.**

PARTS LIST

| <u>ITEM NO.</u> | <u>DESCRIPTION</u> | <u>QTY.</u> | <u>PART-NO.</u> |
|-----------------|---------------------------------|-------------|-----------------|
| 1. | UNDERSIDE OF TIPPING FRAME | 1 | |
| 2. | TURNTABLE CENTRE SHAFT | 1 | WD60-768 |
| 3. | SLIP RING MOUNTING SLEEVE | 1 | WD60-825 |
| 4. | M8 GRUB SCREW x 6 mm LONG | 2 | Z28-007 |
| 5. | SLIP RING ASSY. | 1 | ZD605-308 |
| 6. | INSULATING RING | 1 | ZD605-350 |
| 7. | LOCKING COLLAR | 1 | WD60-770 |
| 8. | 1 1/4" UNC HEX NUT | 1 | Z18-300 |
| 9. | SLIP RING MOUNTING BRACKET ASSY | 1 | WD605-SRMB |
| 10. | 10mm DIA FLAT WASHER 1" O.D. | 4 | Z11-02-101 |
| 11. | 10mm SPRING WASHER | 4 | Z12-02-10 |
| 12. | M10 HEX HD SET x 20mm | 4 | Z26-060S |
| 13. | BRUSHES | 2 | ZD605-306 |
| 14. | INSULATOR SLEEVE | 1 | ZD605-302 |
| 15. | SLIP RING GUARD ASSY | 1 | WD605-SRG |
| 16. | M5 GRUB SCREW | 2 | Z28-005 |

TANCO AUTOWRAP
 CUT AND START UNIT
 SENSOR & MAGNET MOUNTING BRACKETS



WD605-PL5

TANCO AUTOWRAP CUT AND START UNIT 1994

SENSOR AND MAGNET MOUNTING BRACKETS

PARTS LIST

| ITEM NO. | DESCRIPTION | QTY. | PART-NO. |
|----------|--------------------------------|------|-----------|
| 1. | MAGNET MOUNTING BRACKET | 1 | WD605-57 |
| 2. | MAGNET | 1 | D6043 |
| 3. | M6 HEX HD SET x 30mm LONG | 1 | Z26-022S |
| 4. | 6mm DIA FLAT WASHER | 1 | Z11-02-06 |
| 5. | M6 LOCKNUT | 1 | Z23-06 |
| 6. | M8 HEX HD SET x 25mm LONG | 2 | Z26-040S |
| 7. | M8 LOCKNUT (NYLOCK) | 1 | Z23-08 |
| 8. | 8mm DIA SPRING WASHER | 3 | Z12-02-08 |
| 9. | M8 HEX NUT | 3 | Z18-08 |
| 10. | M8 HEX HD SET x 100mm LONG | 1 | Z26-057S |
| 11. | SENSOR MOUNTING BRACKET | 1 | WD605-58 |
| 12. | ROTATE SENSOR MOUNTING BRACKET | 1 | WD605-140 |
| 13. | MOUNTING FLAT | 1 | WD605-07 |
| 14. | M8 HEX HD SET x 20mm LONG | 1 | Z26-020S |

TANCO AUTOWRAP

Cut and start Fault Finding Summary.

This summary is to be read in conjunction with operators handbook.

Note: It has been found that most faults can be attributed to a bad power supply. Therefore it is essential that power supply be taken directly from battery terminals, ensuring correct polarity. Operating voltage is 10V D.C. (under load) to 13.5V D.C.

| <u>Problem</u> | <u>Proposed Remedy</u> |
|--|--|
| (1) Bale Wrap monitor does not power on. | (a) Check polarity on connections to battery terminals. (b) Check fuse, in bale wrap controller. |
| (2) Plunger does not come out after 2 revolutions of turntable. | (a) Ensure that left hand top switch is in auto mode. (b) Check operation in manual mode to ensure that plunger travels in and out. If the plunger does not travel in and out, check all connections from six pin plug, through slip ring to linear actuator. |
| (2)(i) Buzzer sound continuously "bleep", "bleep" and bale wrap monitor does not count above 2 revs. | (c) check voltage while operating in manual mode. This voltage should be no lower than 10V D.C. (under load). Also check connections on battery terminals. (d) Check that bale wrap monitor is counting revolutions and if not check that turntable sensor is within 6mm of magnet on turntable. (e) Carry out continuity check on turntable sensor, by taking reading cross pins 2 & 3 in six pin plug. |

TANCO AUTOWRAP

Cut and Start
Fault Finding Summary.

- (3) Plunger opens too soon and releases film.
 - (a) Check setting for function (1), which indicates number of turns to activate motor. This should be 2.
 - (b) Check setting for function (7), which indicates non auto reset. This should be N.
- (4) Plunger travels out but latch does not engage so plunger travels back in.
 - (a) Increase setting for function (2) which indicates the number of seconds linear actuator powers out for. Setting can be changed in increments of 0.5 sec.
- (5) Plunger snaps closed after about 6 turntable revolutions. This is caused by the Linear Actuator not stopping in park position.
 - (a) Reduce setting for function (4), which indicates the number of seconds required to reverse to park position. Setting can be altered in increments of 0.5 sec. In the park position there should be 5mm to 12mm clearance between cam on push plate assy and latch trigger.
- (6) Plunger opens while turntable rotates after buzzer sounds.
 - (a) Check setting for function (7) which indicates non auto reset. This should be N.
- (7) When machine is tipped plunger does not close.
 - (a) Check clearance between tip sensor on back of tipping frame and magnet on 5mm to 6mm.
 - (b) Check that tip sensor passes magnet, if not adjust magnet position.

TANCO AUTOWRAP

Cut and Start
Fault Finding Summary

(7) (Continued)

- (c) Check that latch trigger is activated by cam on push plate assy. If not adjust trigger.
- (d) Check setting for function (5) which indicates the number of seconds from tipping signal until motor is fully closed. This should be 1.5 sec.

